

IGOGO



Layout Plan of Existing and Proposed Sewers Igogo Ward

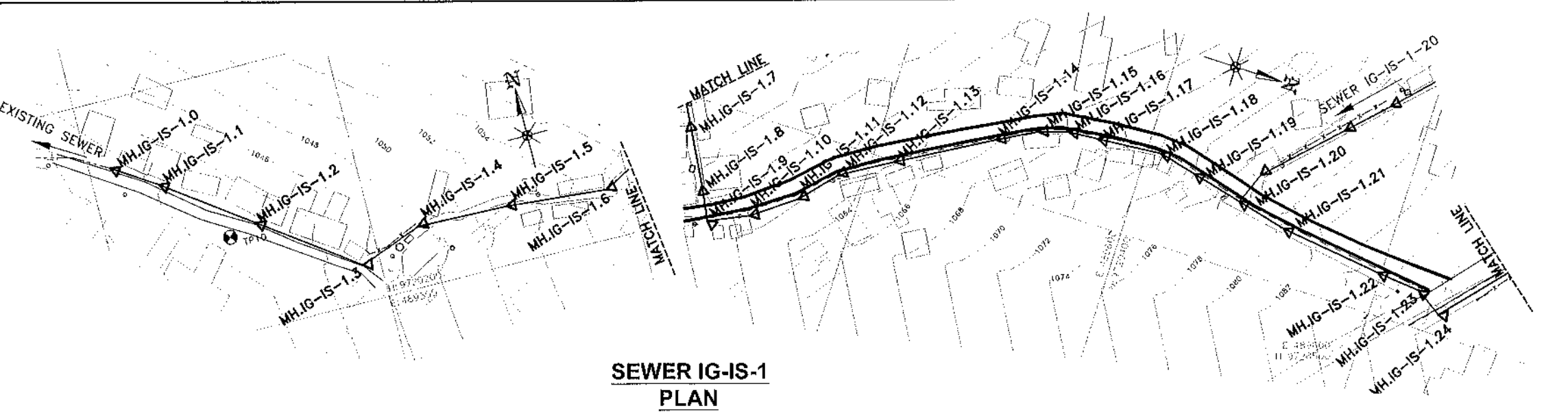


Legend

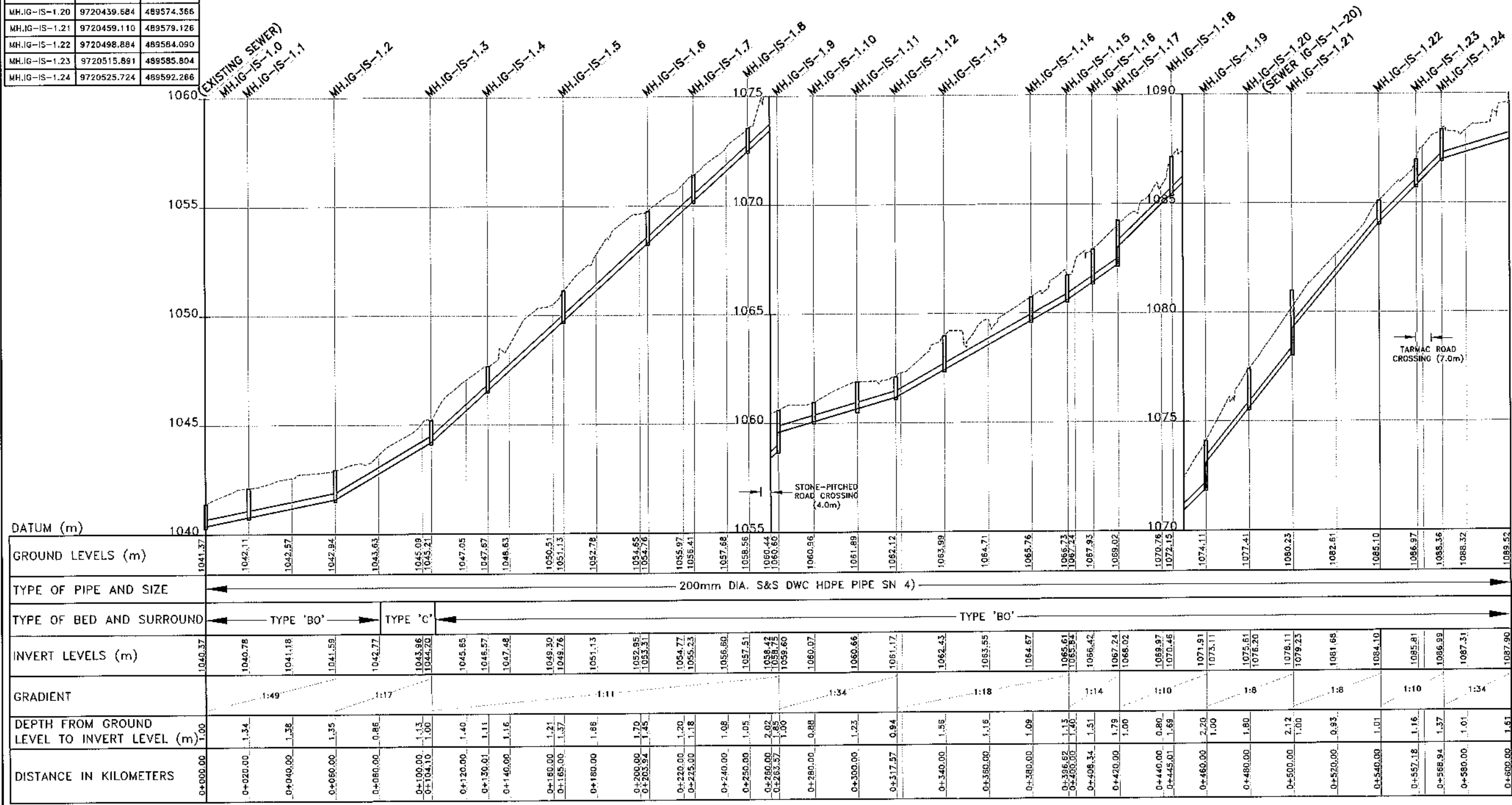
- Contours 2m Intervals
- Existing Sewers
- Proposed Sewers [For Design and Construction]
- Administrative (Ward Boundary)

REVISIONS		SIGN	DATE	APPROVED
BY				
CHECKED				
Client: EAST AFRICAN COMMUNITY (EAC) LAKE VICTORIA BASIN COMMISSION (LVBC)				
P.O. BOX 1510 - 40100 KISUMU, KENYA TEL: +254 57 202 6344				
PROJECT IMPLEMENTATION CONSULTANTS (PIC): JOINT VENTURE				
CES CONSULTING ENGINEERS SALZGITTER GmbH HAMBURGER STRASSE 227 38114 BRAUNSCHWEIG, GERMANY E-MAIL: info@ces.de TEL: +49 531 - 31704-0				
AKUT PARTNER WATTSTRASSE 10 13355 BERLIN, GERMANY TEL: +49 30 8145460 - 0 FAX: +49 30 8145460 - 19				
MANGAT I.B. PATEL (MIBP) LIMITED P.O BOX 48674,00100-GPO, NAIROBI, KENYA E-MAIL: mibp.nairobi@mibp.co.ke TEL: +254-2-2710500				
PROJECT NAME: LAKE VICTORIA BASIN INTEGRATED WATER RESOURCES MANAGEMENT PROGRAMME (LVB-IWRMP)				
CONTRACT TITLE: MWANZA SEWER CONNECTION UPGRADE				
INFILL SEWERS				
DRAWING TITLE: Layout Plan of Existing and Proposed Sewers Igogo Ward				
Designed by: V.K		Drawn by: G.O.N		
Checked by: NJN		Approved by: R.S.R		
Scale: A3-: AS SHOWN		Date: MARCH 2024		
DRG No.	M394(j)/MWZ/IG/01			REV

MANHOLE COORDINATES		
REF. No	NORTHING	EASTING
MH.IG-IS-1.0	9720274.079	489408.275
MH.IG-IS-1.1	9720263.283	489425.111
MH.IG-IS-1.2	9720239.923	489457.581
MH.IG-IS-1.3	9720214.012	489493.269
MH.IG-IS-1.4	9720223.144	489517.515
MH.IG-IS-1.5	9720222.112	489552.489
MH.IG-IS-1.6	9720218.712	489591.282
MH.IG-IS-1.7	9720228.797	489609.768
MH.IG-IS-1.8	9720240.769	489631.715
MH.IG-IS-1.9	9720246.915	489643.820
MH.IG-IS-1.10	9720261.827	489636.835
MH.IG-IS-1.11	9720277.929	489625.072
MH.IG-IS-1.12	9720289.451	489611.813
MH.IG-IS-1.13	9720308.709	489600.305
MH.IG-IS-1.14	9720343.361	489580.324
MH.IG-IS-1.15	9720357.952	489572.364
MH.IG-IS-1.16	9720369.168	489568.964
MH.IG-IS-1.17	9720380.788	489558.014
MH.IG-IS-1.18	9720405.716	489565.978
MH.IG-IS-1.19	9720420.259	489569.606
MH.IG-IS-1.20	9720439.584	489574.366
MH.IG-IS-1.21	9720459.110	489579.126
MH.IG-IS-1.22	9720498.884	489584.090
MH.IG-IS-1.23	9720515.891	489585.804
MH.IG-IS-1.24	9720525.724	489592.266



**SEWER IG-IS-1
PLAN**



**SEWER IG-IS-1
LONGITUDINAL SECTION**

- NOTES:**
- FOR GENERAL SEWER LAYOUT PLAN SEE DRG. No. M394(J)MWZ/IG/01
 - CONTOUR LEVELS ARE AT 2 METER INTERVALS
 - GRID VALUES ARE AT 100 METER INTERVALS
 - FOR BED AND SURROUND DETAILS REFER TO DRG. No. M394(J)MWZ/SD/04

LEGEND - PLAN

EXISTING FEATURES:

- 1220 CONTOUR WITH ELEVATIONS
- SEWER
- DRAIN
- FENCE
- PAVED ROAD
- MURRAM / EARTH ROAD
- PERMANENT BUILDING
- TEMPORARY BUILDING
- POWER POLE
- GATE
- CULVERT
- TP 9 TRIAL PIT

PROPOSED FEATURES:

- SEWER WITH MANHOLE

LEGEND - PROFILE

EXISTING FEATURES:

- GROUND LEVEL

PROPOSED FEATURES:

- GRAVITY SEWER WITH MANHOLE

REVISIONS			
NO.	BY	DATE	APPROVED

CLIENT:

**EAST AFRICAN COMMUNITY (EAC)
LAKE VICTORIA BASIN
COMMISSION (LVBC)**
P.O. BOX 1510 - 40100
KISUMU, KENYA
TEL: +254 57 202 6344

**PROJECT IMPLEMENTATION CONSULTANTS (PIC):
JOINT VENTURE**

**CES CONSULTING ENGINEERS
SALZGITTER GmbH**
HAMBURGER STRASSE 227
38114 BRAUNSCHWEIG, GERMANY
E-MAIL: info@ces.de
TEL: +49 531 - 31704-0

AKUT PARTNER
WATTSTRASSE 10
13355 BERLIN, GERMANY
TEL: +49 30 8145460 - 0
FAX: +49 30 8145460 - 19

MIBP CONSULTING ENGINEERS
MANGAT I.B. PATEL (MIBP) LIMITED
P.O. BOX 48674, 00100-GPO,
NAIROBI, KENYA
E-MAIL: mibp.nairobi@mibp.co.ke
TEL: +254-2-2710500

PROJECT NAME:
LAKE VICTORIA BASIN INTEGRATED
WATER RESOURCES MANAGEMENT
PROGRAMME (LVB-IWRMP)

CONTRACT TITLE:
MWANZA SEWER CONNECTION UPGRADE

**INFILL SEWERS
IGOGO WARD**

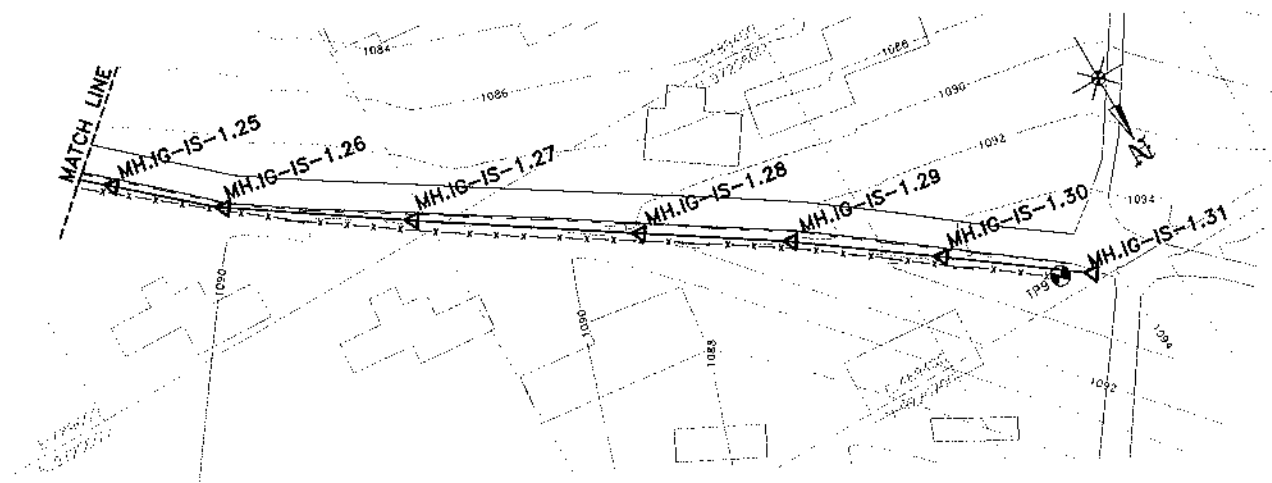
DRAWING TITLE:
SEWER IG-IS-1
PLAN AND LONGITUDINAL SECTION

SHEET 1 OF 2

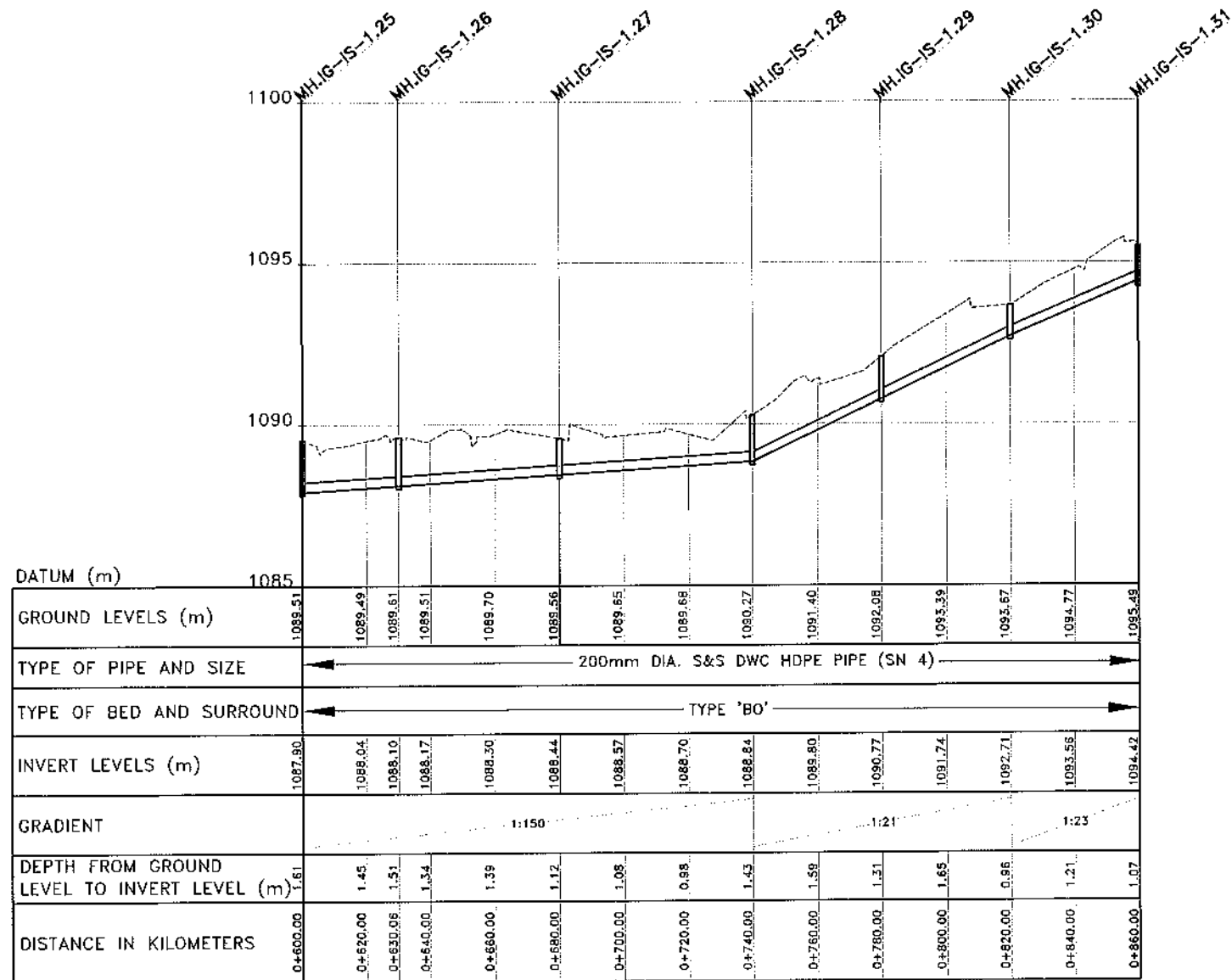
Designed by: C.N.M	Drawn by: C.N.M
Checked by: N.J.N	Approved by: R.S.R
Scale: A3	HOR: 1:200 VER: 1:200
Date: MARCH 2024	

DRG No. M394(J)MWZ/IG/02

MANHOLE COORDINATES		
REF. No	NORTHING	EASTING
MH.IG-IS-1.25	9720554.403	489556.883
MH.IG-IS-1.26	9720570.697	489537.925
MH.IG-IS-1.27	9720598.447	489496.332
MH.IG-IS-1.28	9720625.971	489454.592
MH.IG-IS-1.29	9720647.723	489421.023
MH.IG-IS-1.30	9720671.285	489388.684
MH.IG-IS-1.31	9720695.951	489354.773



**SEWER IG-IS-1
PLAN**



**SEWER IG-IS-1
LONGITUDINAL SECTION**

NOTES:

- FOR GENERAL SEWER LAYOUT PLAN SEE DRG. No. M394(J)/MWZ/IG/01
- CONTOUR LEVELS ARE AT 2 METER INTERVALS
- GRID VALUES ARE AT 100 METER INTERVALS
- FOR BED AND SURROUND DETAILS REFER TO DRG. No. M394(J)/MWZ/SD/04

LEGEND - PLAN

EXISTING FEATURES:

- 120 CONTOUR WITH ELEVATIONS
- SEWER
- DRAIN
- FENCE
- PAVED ROAD
- MURRAM / EARTH ROAD
- PERMANENT BUILDING
- TEMPORARY BUILDING
- POWER POLE
- GATE
- CULVERT
- TP 9 TRIAL PIT

PROPOSED FEATURES:

- SEWER WITH MANHOLE

LEGEND - PROFILE

EXISTING FEATURES:

- GROUND LEVEL

PROPOSED FEATURES:

- GRAVITY SEWER WITH MANHOLE

REVISIONS	SIGN	DATE	APPROVED

CLIENT:

EAST AFRICAN COMMUNITY (EAC)
LAKE VICTORIA BASIN COMMISSION (LVBC)
P.O. BOX 1510 - 40100
KISUMU, KENYA
TEL: +254 57 202 6344

PROJECT IMPLEMENTATION CONSULTANTS (PIC):

JOINT VENTURE

CES CONSULTING ENGINEERS
SALZGITTER GmbH
HAMBURGER STRASSE 227
38114 BRAUNSCHWEIG, GERMANY
E-MAIL: info@ces.de
TEL: +49 531 - 31704-0

AKUT PARTNER
WATTSTRASSE 10
13355 BERLIN, GERMANY
TEL: +49 30 8145460 - 0
FAX: +49 30 8145460 - 19

MIBP MANGAT I.B. PATEL (MIBP) LIMITED
P.O. BOX 48674, 00100-GPO,
NAIROBI, KENYA
E-MAIL: mibp.nairobi@mibp.co.ke
TEL: +254-2-2710500

PROJECT NAME:

LAKE VICTORIA BASIN INTEGRATED
WATER RESOURCES MANAGEMENT
PROGRAMME (LVB-IWRMP)

CONTRACT TITLE:

MWANZA SEWER CONNECTION UPGRADE

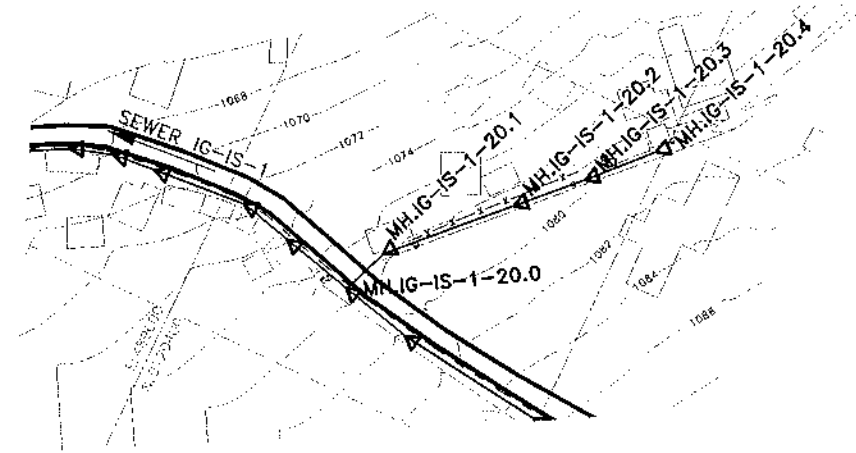
**INFILL SEWERS
IGOGO WARD**

DRAWING TITLE:

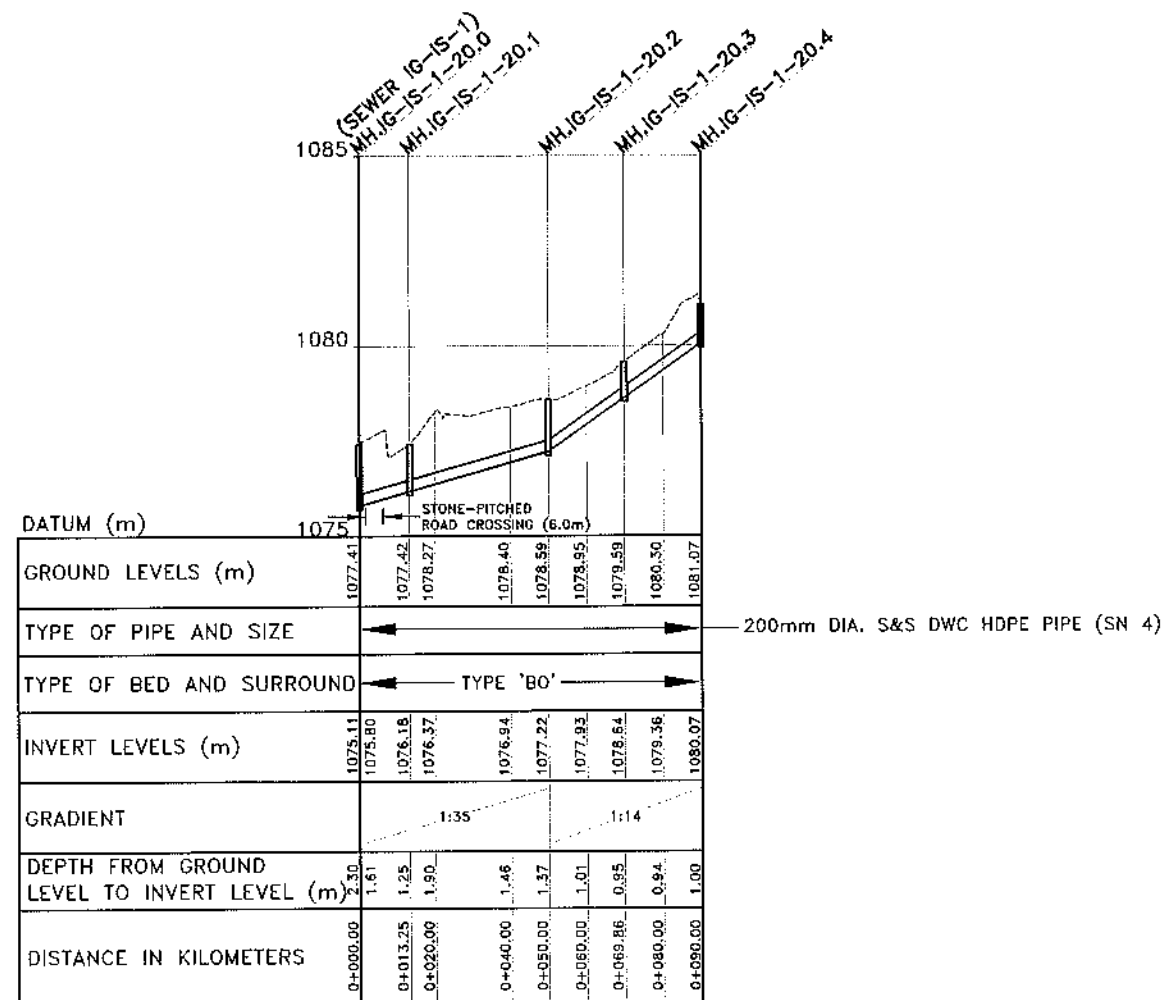
SEWER IG-IS-1
PLAN AND LONGITUDINAL SECTION
SHEET 2 OF 2

Designed by: C.N.M	Drawn by: C.N.M
Checked by: N.J.N	Approved by: R.S.R
Scale: A3- HOR: 1:2,000 VER: 1:200	Date: MARCH 2024
DRG No. M394(J)/MWZ/IG/03	REV

MANHOLE COORDINATES		
REF. No	NORTHING	EASTING
MH.IG-IS-1-20.0	9720439.684	489574.366
MH.IG-IS-1-20.1	9720444.454	489562.009
MH.IG-IS-1-20.2	9720470.243	489535.821
MH.IG-IS-1-20.3	9720484.175	489521.673
MH.IG-IS-1-20.4	9720497.964	489506.989



**SEWER IG-IS-1-20
PLAN**



**SEWER IG-IS-1-20
LONGITUDINAL SECTION**

NOTES:

- FOR GENERAL SEWER LAYOUT PLAN SEE DRG. No. M394(j)/MWZ/IG/01
- CONTOUR LEVELS ARE AT 2 METER INTERVALS
- GRID VALUES ARE AT 100 METER INTERVALS
- FOR BED AND SURROUND DETAILS REFER TO DRG. No. M394(j)/MWZ/SD/04

LEGEND - PLAN

EXISTING FEATURES:

- 1220 CONTOUR WITH ELEVATIONS
- SEWER
- DRAIN
- FENCE
- PAVED ROAD
- MURRAM / EARTH ROAD
- PERMANENT BUILDING
- TEMPORARY BUILDING
- POWER POLE
- GATE
- CULVERT
- TP 9 TRIAL PIT

PROPOSED FEATURES:

- SEWER WITH MANHOLE

LEGEND - PROFILE

EXISTING FEATURES:

- GROUND LEVEL

PROPOSED FEATURES:

- GRAVITY SEWER WITH MANHOLE

REVISIONS				SIGN	DATE	APPROVED
NO.	DESCRIPTION	BY	CHECKED			

CLIENT:

EAST AFRICAN COMMUNITY (EAC)
LAKE VICTORIA BASIN COMMISSION (LVBC)
P.O. BOX 1510 - 40100
KISUMU, KENYA
TEL: +254 57 202 6344

PROJECT IMPLEMENTATION CONSULTANTS (PIC):

JOINT VENTURE

CCES
CES CONSULTING ENGINEERS
SALZGITTER GmbH
HAMBURGER STRASSE 227
38114 BRAUNSCHWEIG, GERMANY
E-MAIL: info@ces.de
TEL: +49 531 - 31704-0

AKUT
AKUT PARTNER
WATTSTRASSE 10
13355 BERLIN, GERMANY
TEL: +49 30 8145460-0
FAX: +49 30 8145460-19

MIBP
MANGAT I.B. PATEL (MIBP) LIMITED
P.O. BOX 48674, 00100-GPO,
NAIROBI, KENYA
E-MAIL: mibp.nairobi@mitp.co.ke
TEL: +254-2-2710500

PROJECT NAME:

LAKE VICTORIA BASIN INTEGRATED
WATER RESOURCES MANAGEMENT
PROGRAMME (LVB-IWRMP)

CONTRACT TITLE:

MWANZA SEWER CONNECTION UPGRADE

**INFILL SEWERS
IGOGO WARD**

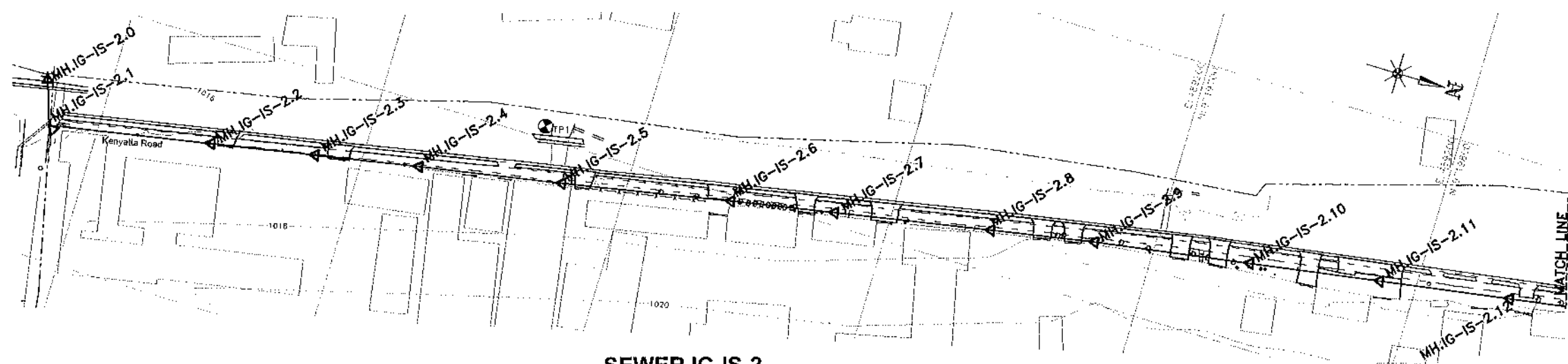
DRAWING TITLE:

SEWER IG-IS-1-20
PLAN AND LONGITUDINAL SECTION
SHEET 1 OF 1

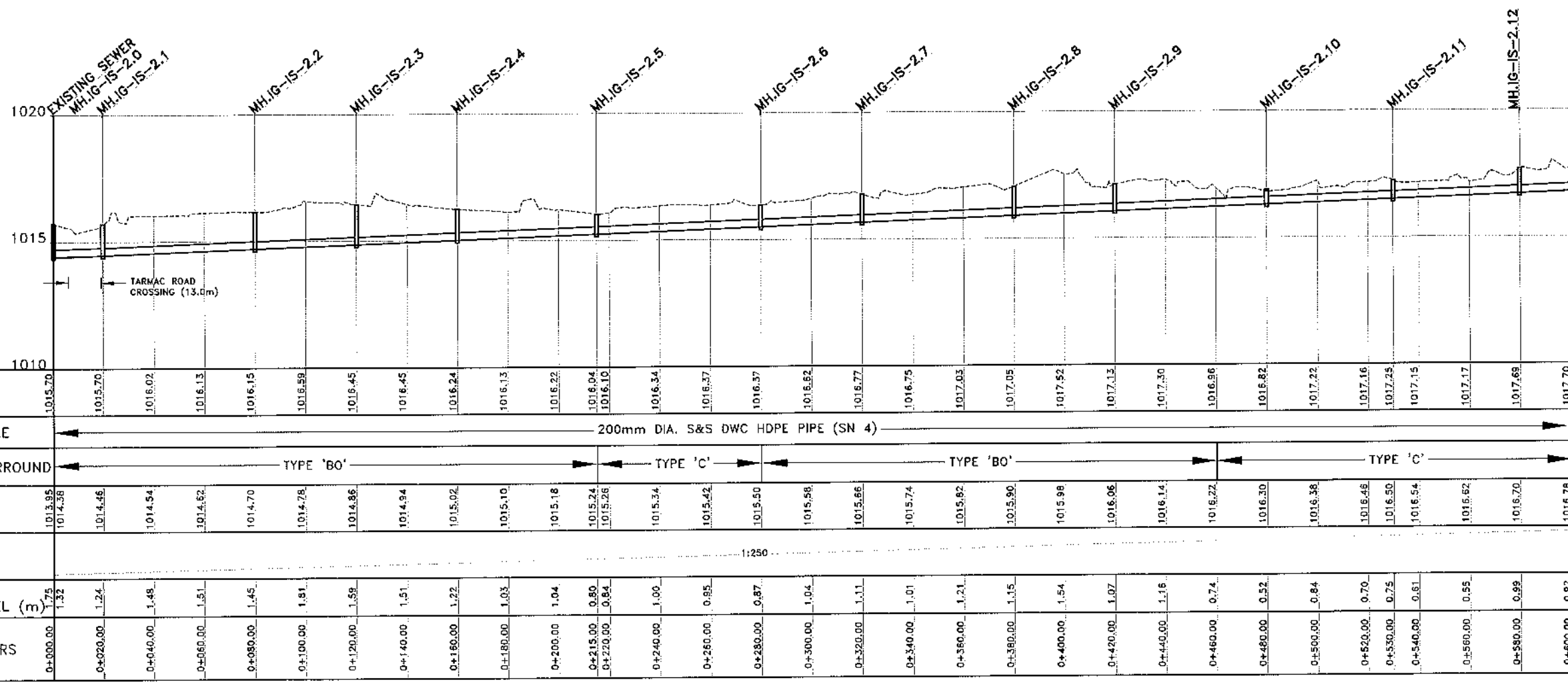
Designed by: C.N.M	Drawn by: C.N.M
Checked by: N.J.N	Approved by: R.S.R
Scale: A3- MOR: 1:2000 VER: 1:200	Date: MARCH 2024

DRG No. M394(j)/MWZ/IG/04

MANHOLE COORDINATES		
REF. No	NORTHING	EASTING
MH.IG-IS-2.0	9719275.425	489331.042
MH.IG-IS-2.1	9719261.598	489349.682
MH.IG-IS-2.2	9719340.993	489338.907
MH.IG-IS-2.3	9719380.318	489331.591
MH.IG-IS-2.4	9719419.657	489324.349
MH.IG-IS-2.5	9719473.820	489314.790
MH.IG-IS-2.6	9719537.685	489302.696
MH.IG-IS-2.7	9719577.023	489295.450
MH.IG-IS-2.8	9719636.059	489284.736
MH.IG-IS-2.9	9719675.433	489277.691
MH.IG-IS-2.10	9719734.703	489266.358
MH.IG-IS-2.11	9719784.094	489260.580
MH.IG-IS-2.12	9719833.486	489252.803



**SEWER IG-IS-2
PLAN**



**SEWER IG-IS-2
LONGITUDINAL SECTION**

NOTES:

- FOR GENERAL SEWER LAYOUT PLAN SEE DRG. No. M394(j)MWZ/IG/01
- CONTOUR LEVELS ARE AT 2 METER INTERVALS
- GRID VALUES ARE AT 100 METER INTERVALS
- FOR BED AND SURROUND DETAILS REFER TO DRG. No. M394(j)MWZ/SD/04

LEGEND - PLAN

EXISTING FEATURES:

- 1220 CONTOUR WITH ELEVATIONS
- SEWER
- DRAIN
- FENCE
- PAVED ROAD
- MURRAM / EARTH ROAD
- PERMANENT BUILDING
- TEMPORARY BUILDING
- POWER POLE
- GATE
- CULVERT
- TP 9 TRIAL PIT

PROPOSED FEATURES:

- SEWER WITH MANHOLE

LEGEND - PROFILE

EXISTING FEATURES:

- GROUND LEVEL

PROPOSED FEATURES:

- GRAVITY SEWER WITH MANHOLE

REV	NO	DESCRIPTION	DATE	APPROVED

CLIENT:

EAST AFRICAN COMMUNITY (EAC)
LAKE VICTORIA BASIN COMMISSION (LVBC)
P.O. BOX 1510 - 40100
KISUMU, KENYA
TEL: +254 57 202 6344

PROJECT IMPLEMENTATION CONSULTANTS (PIC):

JOINT VENTURE

CCES
CES CONSULTING ENGINEERS
SALZGITTER GmbH
HAMBURGER STRASSE 227
38114 BRAUNSCHWEIG, GERMANY
E-MAIL: info@ces.de
TEL: +49 531 - 31704-0

AKUT
AKUT PARTNER
WATTSTRASSE 10
13355 BERLIN, GERMANY
TEL: +49 30 8145460 - 0
FAX: +49 30 8145460 - 19

MIBP
MANGAT I.B. PATEL (MIBP) LIMITED
P.O. BOX 48674, 00100-GPO,
NAIROBI, KENYA
E-MAIL: mibp.nairobi@mibp.co.ke
TEL: +254-2-2710500

PROJECT NAME:
LAKE VICTORIA BASIN INTEGRATED WATER RESOURCES MANAGEMENT PROGRAMME (LVB-IWRMP)

CONTRACT TITLE:
MWANZA SEWER CONNECTION UPGRADE

**INFILL SEWERS
IGOGO WARD**

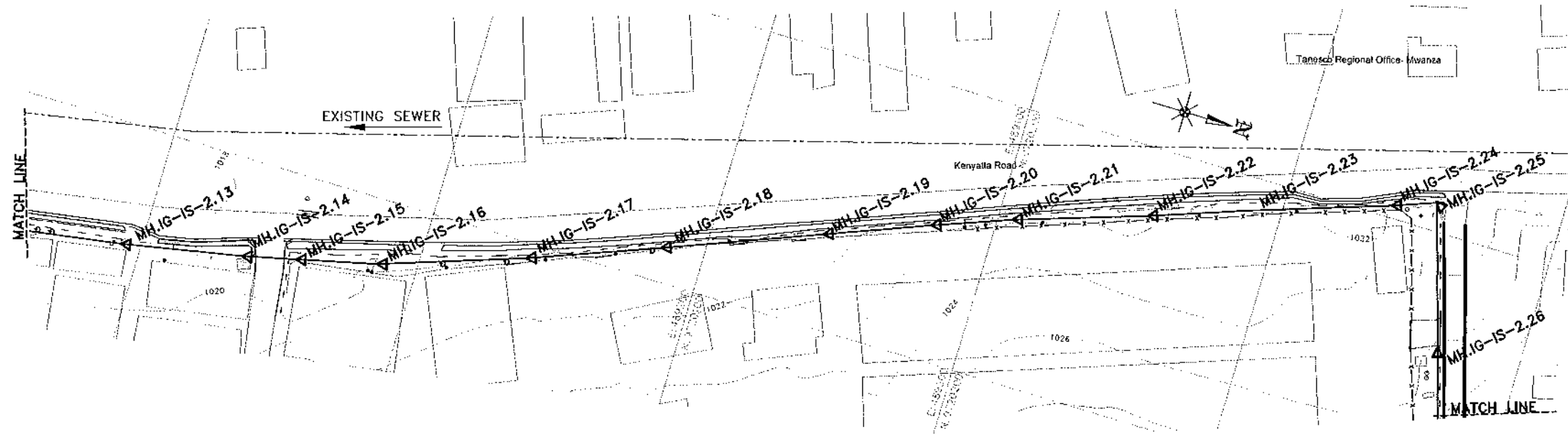
DRAWING TITLE:
SEWER IG-IS-2
PLAN AND LONGITUDINAL SECTION

SHEET 1 OF 3

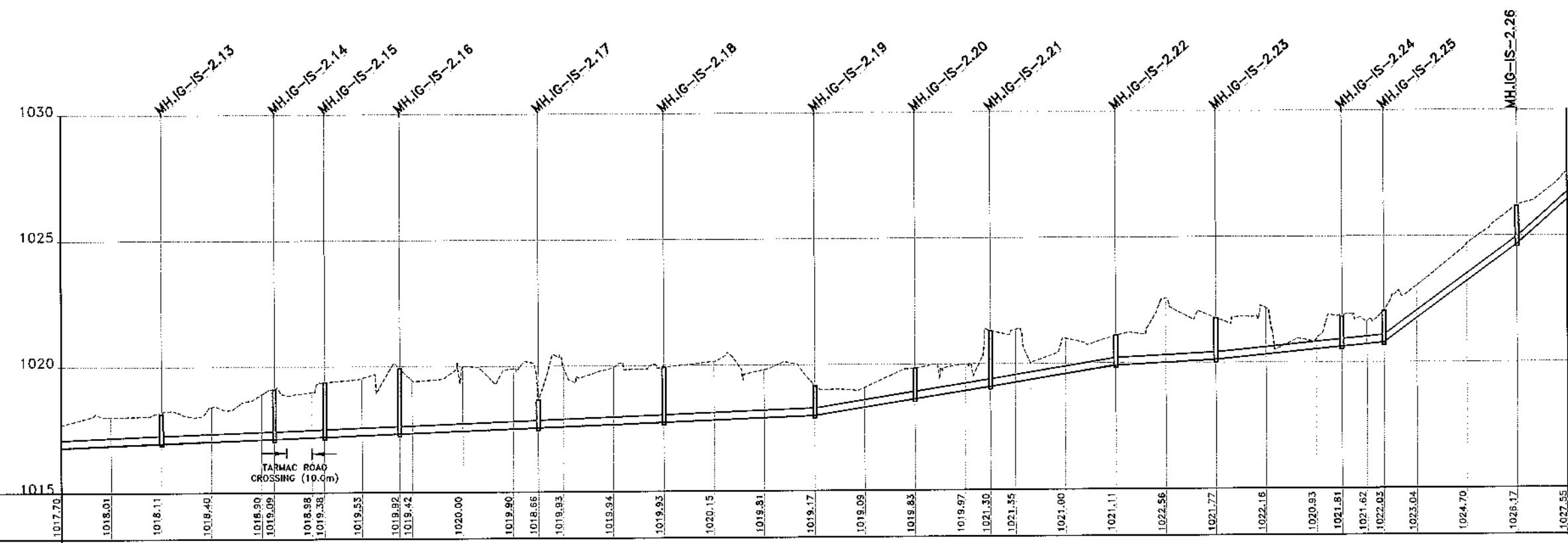
Designed by: C.N.M	Drawn by: C.N.M
Checked by: N.J.N	Approved by: R.S.R
Scale: A3, HOR: 1:2,000 VER: 1:200	Date: MARCH 2024

DRG No. **M394(j)MWZ/IG/05**

MANHOLE COORDINATES		
REF. No	NORTHING	EASTING
MH.IG-IS-2.13	9719892.761	489243.509
MH.IG-IS-2.14	9719936.942	489234.963
MH.IG-IS-2.15	9719956.409	489230.374
MH.IG-IS-2.16	9719985.592	489223.434
MH.IG-IS-2.17	9720037.615	489205.576
MH.IG-IS-2.18	9720084.293	489187.652
MH.IG-IS-2.19	9720140.140	489165.720
MH.IG-IS-2.20	9720177.378	489151.114
MH.IG-IS-2.21	9720205.476	489140.603
MH.IG-IS-2.22	9720252.957	489124.932
MH.IG-IS-2.23	9720290.639	489111.512
MH.IG-IS-2.24	9720338.002	489095.504
MH.IG-IS-2.25	9720353.636	489089.655
MH.IG-IS-2.26	9720369.118	489140.670



**SEWER IG-IS-2
PLAN**



**SEWER IG-IS-2
LONGITUDINAL SECTION**

- NOTES:**
- FOR GENERAL SEWER LAYOUT PLAN SEE DRG. No. M394(j)MWZ/IG/01
 - CONTOUR LEVELS ARE AT 2 METER INTERVALS
 - GRID VALUES ARE AT 100 METER INTERVALS
 - FOR BED AND SURROUND DETAILS REFER TO DRG. No. M394(j)MWZ/SD/04

LEGEND - PLAN

EXISTING FEATURES:

- 1020 CONTOUR WITH ELEVATIONS
- SEWER
- DRAIN
- FENCE
- PAVED ROAD
- MURRAM / EARTH ROAD
- PERMANENT BUILDING
- TEMPORARY BUILDING
- POWER POLE
- GATE
- CULVERT
- TP 9 TRIAL PIT

PROPOSED FEATURES:

- SEWER WITH MANHOLE

LEGEND - PROFILE

EXISTING FEATURES:

- GROUND LEVEL

PROPOSED FEATURES:

- GRAVITY SEWER WITH MANHOLE

REVISIONS	SIGN	DATE	APPROVED

CLIENT:


**EAST AFRICAN COMMUNITY (EAC)
LAKE VICTORIA BASIN
COMMISSION (LVBC)**
 P.O. BOX 1510 - 40100
 KISUMU, KENYA
 TEL: +254 57 202 6344

PROJECT IMPLEMENTATION CONSULTANTS (PIC):

JOINT VENTURE

CCES
 CES CONSULTING ENGINEERS
 SALZGITTER GmbH
 HAMBURGER STRASSE 227
 38114 BRAUNSCHWEIG, GERMANY
 E-MAIL: info@ces.de
 TEL: +49 531 - 31704-0

AKUT
 AKUT PARTNER
 WATTSTRASSE 10
 13355 BERLIN, GERMANY
 TEL: +49 30 8145460 - 0
 FAX: +49 30 8145460 - 19

MIBP
 MANGAT I.B. PATEL (MIBP) LIMITED
 P.O. BOX 48674, 00100-GPO,
 NAIROBI, KENYA
 E-MAIL: mibp.nairobi@mibp.co.ke
 TEL: +254-2-2710500

PROJECT NAME:

**LAKE VICTORIA BASIN INTEGRATED
WATER RESOURCES MANAGEMENT
PROGRAMME (LVBIWRMP)**

CONTRACT TITLE:

MWANZA SEWER CONNECTION UPGRADE

**INFILL. SEWERS
IGOGO WARD**

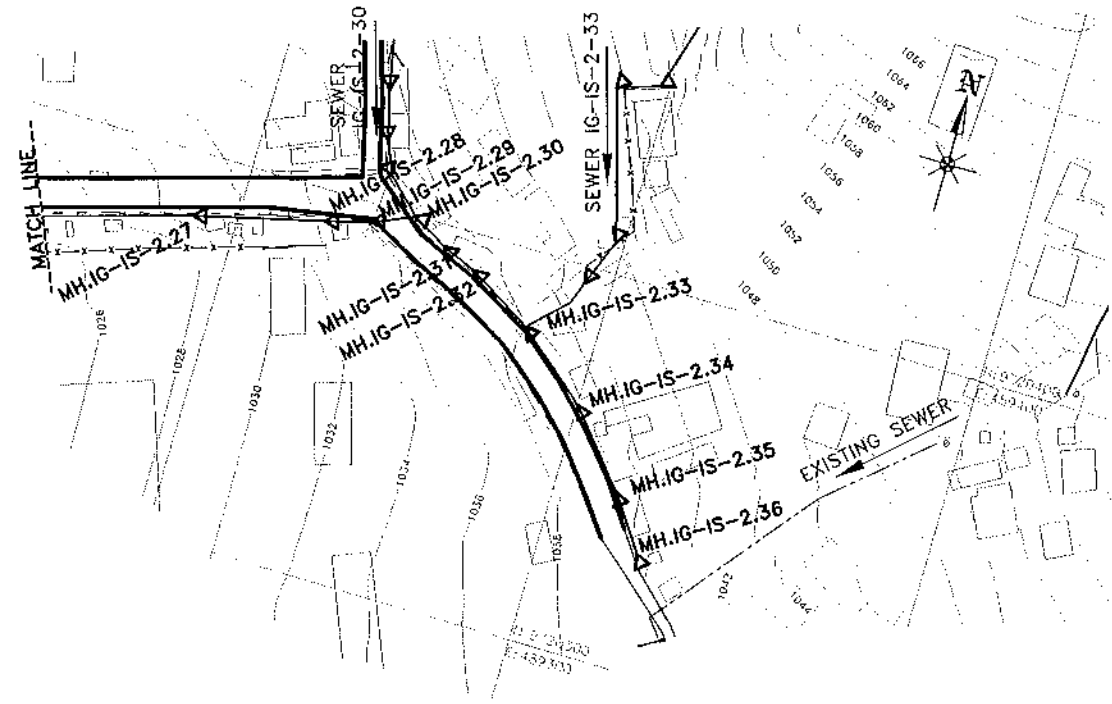
DRAWING TITLE:

**SEWER IG-IS-2
PLAN AND LONGITUDINAL SECTION**

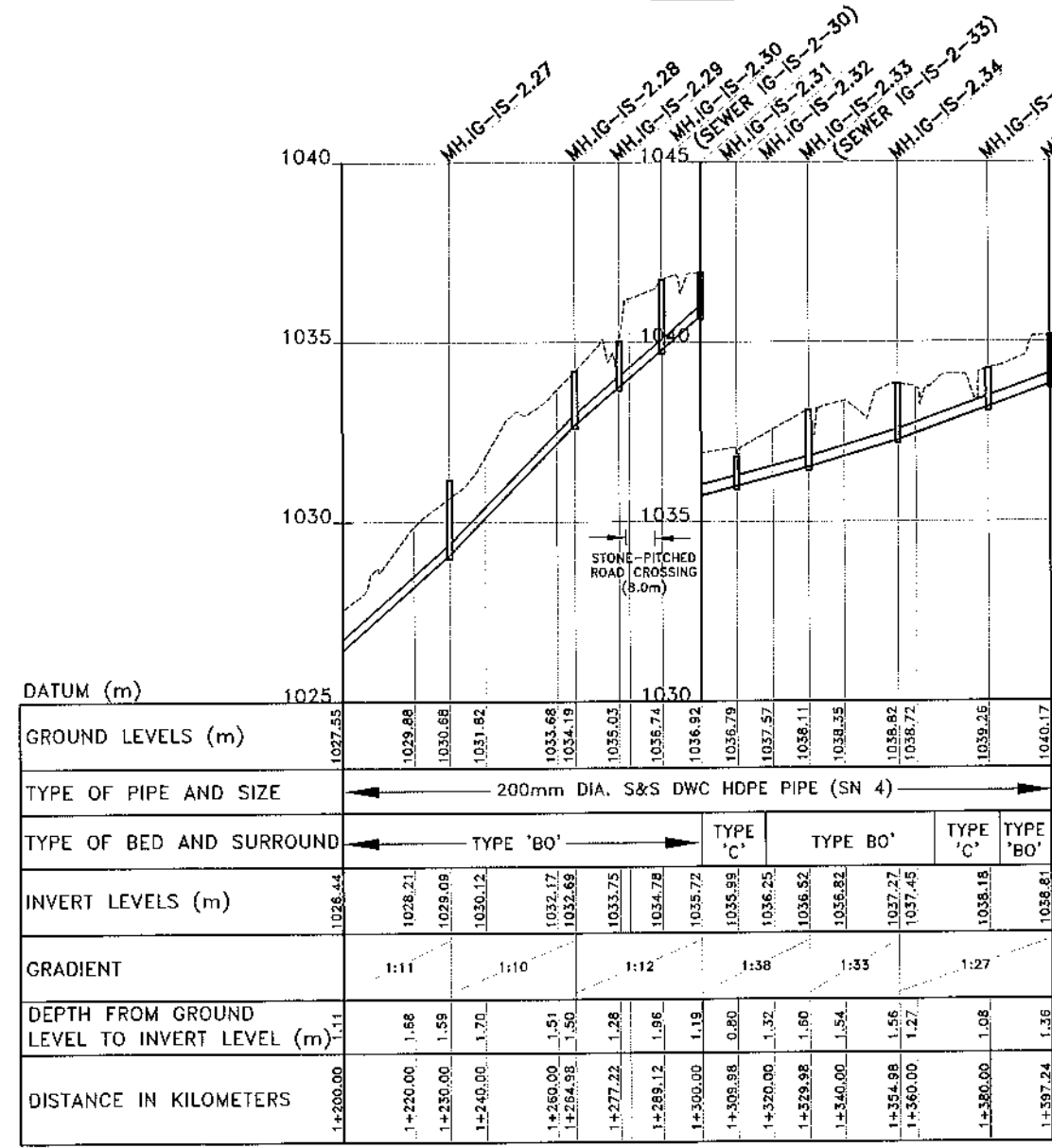
SHEET 2 OF 3

Designed by: C.N.M	Drawn by: C.N.M
Checked by: N.J.N	Approved by: R.S.R
Scale: A3: HOR. 1:2,000 VER: 1:200	Date: MARCH 2024

MANHOLE COORDINATES		
REF. No	NORTHING	EASTING
MH.IG-IS-2.27	9720383.423	489188.580
MH.IG-IS-2.28	9720391.882	489222.522
MH.IG-IS-2.29	9720395.048	489234.344
MH.IG-IS-2.30	9720399.768	489245.265
MH.IG-IS-2.31	9720394.291	489254.647
MH.IG-IS-2.32	9720390.389	489263.855
MH.IG-IS-2.33	9720380.072	489280.988
MH.IG-IS-2.34	9720364.050	489300.212
MH.IG-IS-2.35	9720345.019	489316.377
MH.IG-IS-2.36	9720330.891	489326.285



**SEWER IG-IS-2
PLAN**



**SEWER IG-IS-2
LONGITUDINAL SECTION**

NOTES:

- FOR GENERAL SEWER LAYOUT PLAN SEE DRG. No. M394(J)/MWZ/IG/01
- CONTOUR LEVELS ARE AT 2 METER INTERVALS
- GRID VALUES ARE AT 100 METER INTERVALS
- FOR BED AND SURROUND DETAILS REFER TO DRG. No. M394(J)/MWZ/SD/04

LEGEND - PLAN

EXISTING FEATURES:

- 1:20 CONTOUR WITH ELEVATIONS
- SEWER
- DRAIN
- FENCE
- PAVED ROAD
- MURRAM / EARTH ROAD
- PERMANENT BUILDING
- TEMPORARY BUILDING
- POWER POLE
- GATE
- CULVERT
- TP 9 TRIAL PIT

PROPOSED FEATURES:

- SEWER WITH MANHOLE

LEGEND - PROFILE

EXISTING FEATURES:

- GROUND LEVEL

PROPOSED FEATURES:

- GRAVITY SEWER WITH MANHOLE

REVISIONS	BY	DATE	APPROVED

CLIENT:

EAST AFRICAN COMMUNITY (EAC)
LAKE VICTORIA BASIN COMMISSION (LVBC)
P.O. BOX 1510 - 40100
KISUMU, KENYA
TEL: +254 57 202 6344

PROJECT IMPLEMENTATION CONSULTANTS (PIC):

JOINT VENTURE

CES CONSULTING ENGINEERS
SALZGITTER GmbH
HAMBURGER STRASSE 227
38114 BRAUNSCHWEIG, GERMANY
E-MAIL: info@ces.de
TEL: +49 531 - 31704-0

AKUT PARTNER
WATTSTRASSE 10
13355 BERLIN, GERMANY
TEL: +49 30 8145460 - 0
FAX: +49 30 8145460 - 19

MIBP CONSULTING ENGINEERS
MANGAT I.B. PATEL (MIBP) LIMITED
P.O. BOX 48674, 00100-GPO,
NAIROBI, KENYA
E-MAIL: mibp.nairobi@mibp.co.ke
TEL: +254-2-2710500

PROJECT NAME:
LAKE VICTORIA BASIN INTEGRATED WATER RESOURCES MANAGEMENT PROGRAMME (LVB-IWRMP)

CONTRACT TITLE:
MWANZA SEWER CONNECTION UPGRADE

**INFILL SEWERS
IGOGO WARD**

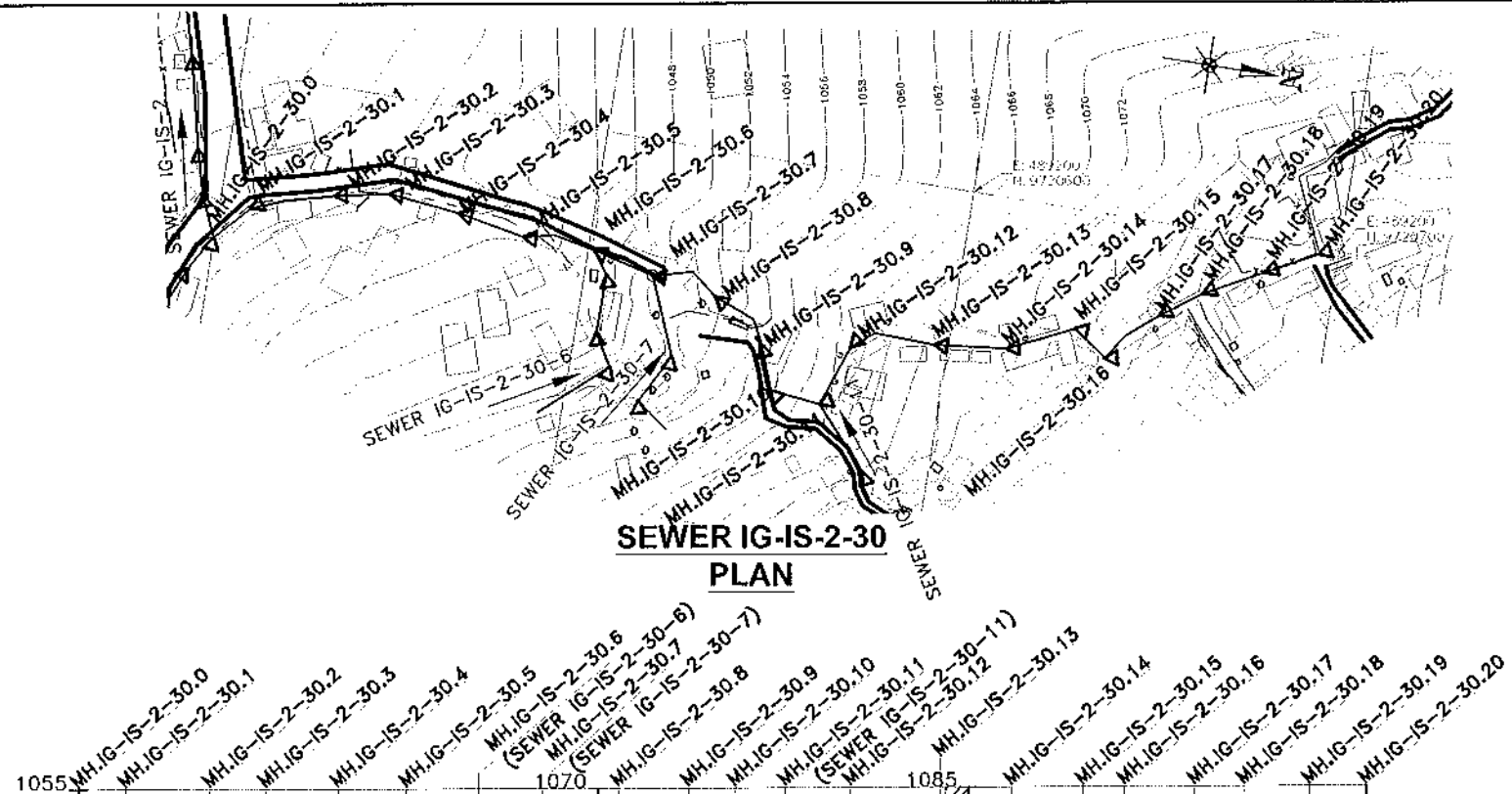
DRAWING TITLE:
SEWER IG-IS-2
PLAN AND LONGITUDINAL SECTION

SHEET 3 OF 3

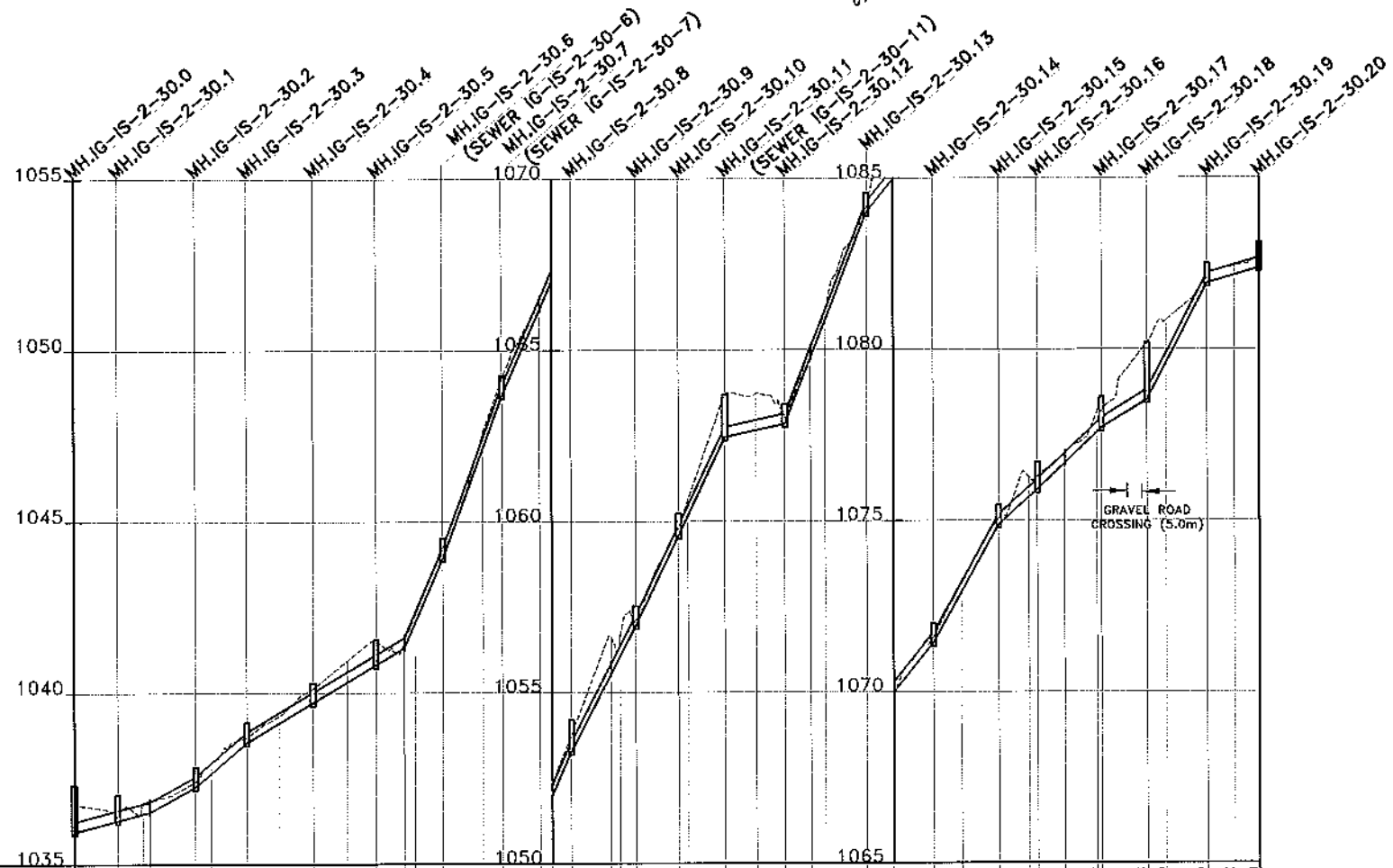
Designed by: C.N.M	Drawn by: C.N.M
Checked by: N.J.M	Approved by: R.S.R
Scale: A3, HOR: 1:2,000 VER: 1:200	Date: MARCH 2024

DRG No. M394(J)/MWZ/IG/07

MANHOLE COORDINATES		
REF. No	NORTHING	EASTING
MH.IG-IS-2-30.0	9720399.768	489245.265
MH.IG-IS-2-30.1	9720408.417	489236.005
MH.IG-IS-2-30.2	9720430.117	489229.000
MH.IG-IS-2-30.3	9720444.758	489226.068
MH.IG-IS-2-30.4	9720464.188	489228.129
MH.IG-IS-2-30.5	9720482.350	489231.556
MH.IG-IS-2-30.6	9720501.537	489232.042
MH.IG-IS-2-30.7	9720518.413	489236.254
MH.IG-IS-2-30.8	9720536.073	489239.113
MH.IG-IS-2-30.9	9720550.395	489249.732
MH.IG-IS-2-30.10	9720554.863	489261.492
MH.IG-IS-2-30.11	9720568.458	489263.031
MH.IG-IS-2-30.12	9720573.287	489243.771
MH.IG-IS-2-30.13	9720586.278	489242.288
MH.IG-IS-2-30.14	9720615.719	489240.085
MH.IG-IS-2-30.15	9720633.192	489231.773
MH.IG-IS-2-30.16	9720642.487	489238.353
MH.IG-IS-2-30.17	9720655.179	489224.656
MH.IG-IS-2-30.18	9720665.866	489216.857
MH.IG-IS-2-30.19	9720681.196	489208.586
MH.IG-IS-2-30.20	9720694.721	489201.368



SEWER IG-IS-2-30
PLAN



DATUM (m)	1035	1040	1045	1050	1055	1060	1065	1070	1075	1080	1085	1090	1095	1100	1105	1110	1115	1120	1125	1130	1135	1140	1145	1150	1155	1160	1165	1170	1175	1180	1185	1190	1195	1200				
GROUND LEVELS (m)	1036.74	1036.43	1036.85	1037.95	1038.71	1039.34	1040.12	1040.94	1041.56	1041.46	1042.25	1044.23	1047.64	1049.20	1052.40	1053.76	1056.63	1057.11	1059.81	1063.70	1063.72	1063.05	1063.10	1069.16	1070.56	1071.58	1073.16	1075.07	1076.29	1076.93	1076.23	1078.19	1080.18	1080.85	1082.09	1082.42	1082.70	
TYPE OF PIPE AND SIZE	OD 110mm DIA HDPE PIPE WITH BUTT FUSION JOINTING TO PN 6																																					
TYPE OF BED AND SURROUND	TYPE 'D'																																					
INVERT LEVELS (m)	1035.73	1035.95	1036.53	1037.27	1038.56	1039.13	1040.32	1040.82	1041.31	1042.06	1043.93	1047.18	1048.88	1052.01	1053.28	1055.95	1056.94	1059.58	1062.46	1062.65	1062.84	1064.78	1069.00	1069.98	1071.43	1072.92	1074.89	1075.91	1076.67	1077.58	1077.71	1079.53	1079.59	1081.92	1082.16	1082.37		
GRADIENT	1:38	1:18	1:12	1:17	1:4	1:4	1:4	1:5	1:5	1:46	1:4	1:8	1:6	1:11	1:10	1:16	1:5	1:34																				
DEPTH FROM GROUND LEVEL TO INVERT LEVEL (m)	0.19	0.15	0.32	0.15	0.30	0.15	0.62	0.74	0.15	0.20	0.30	0.46	0.51	0.39	0.48	0.58	0.17	0.23	1.24	1.07	0.21	0.33	0.16	0.58	0.15	0.24	0.19	0.38	0.26	0.65	0.48	1.65	1.26	0.16	0.26	0.32		
DISTANCE IN KILOMETERS	0+000.00	0+012.67	0+022.11	0+035.53	0+040.00	0+050.46	0+080.00	0+089.99	0+100.00	0+088.48	0+096.78	0+100.00	0+108.12	0+120.00	0+125.52	0+140.00	0+145.57	0+160.00	0+164.56	0+180.00	0+190.82	0+200.00	0+208.26	0+215.77	0+232.11	0+240.00	0+251.66	0+260.00	0+271.02	0+282.41	0+290.44	0+300.00	0+301.30	0+314.53	0+320.00	0+331.95	0+340.00	0+347.28

SEWER IG-IS-2-30
LONGITUDINAL SECTION

NOTES:

- FOR GENERAL SEWER LAYOUT PLAN SEE DRG. No. M394(j)/MWZIG/01
- CONTOUR LEVELS ARE AT 2 METER INTERVALS
- GRID VALUES ARE AT 100 METER INTERVALS
- FOR BED AND SURROUND DETAILS REFER TO DRG. No. M394(j)/MWZIG/04
- SIMPLIFIED SEWER TO BE DONE TOGETHER WITH 1.2m WIDE STEPPED FOOTPATH

LEGEND - PLAN

EXISTING FEATURES:

- 1220 CONTOUR WITH ELEVATIONS
- SEWER
- DRAIN
- FENCE
- PAVED ROAD
- MURRAM / EARTH ROAD
- PERMANENT BUILDING
- TEMPORARY BUILDING
- POWER POLE
- GATE
- CULVERT
- TRIAL PIT

PROPOSED FEATURES:

- SEWER WITH MANHOLE

LEGEND - PROFILE

EXISTING FEATURES:

- GROUND LEVEL

PROPOSED FEATURES:

- GRAVITY SEWER WITH MANHOLE

REVISIONS	SIGN	DATE	APPROVED
BY			
CHECKED			

CLIENT:

EAST AFRICAN COMMUNITY (EAC)
LAKE VICTORIA BASIN
COMMISSION (LVBC)
P.O. BOX 1510 - 40100
KISUMU, KENYA
TEL: +254 57 202 6344

PROJECT IMPLEMENTATION CONSULTANTS (PIC):

JOINT VENTURE
CCES CES CONSULTING ENGINEERS
SALZGITTER GmbH
HAMBURGER STRASSE 227
38114 BRAUNSCHWEIG, GERMANY
E-MAIL: info@ces.de
TEL: +49 531 - 31704-0
AKUT AKUT PARTNER
WATTSTRASSE 10
13355 BERLIN, GERMANY
TEL: +49 30 6145480 - 0
FAX: +49 30 6145460 - 19

MIBP MANGAT I.B. PATEL (MIBP) LIMITED
P.O. BOX 48674, 00100-GPO,
NAIROBI, KENYA
E-MAIL: mibp.nairobi@mibp.co.ke
TEL: +254-2-2710500

PROJECT NAME:

LAKE VICTORIA BASIN INTEGRATED
WATER RESOURCES MANAGEMENT
PROGRAMME (LVB-IWRMP)

CONTRACT TITLE:
MWANZA SEWER CONNECTION UPGRADE

INFILL SEWERS
IGOGO WARD

DRAWING TITLE:

SEWER IG-IS-2-30
PLAN AND LONGITUDINAL SECTION

SHEET 1 OF 1

Designed by: C.N.M	Drawn by: C.N.M
Checked by: N.J.N	Approved by: R.S.R
Scale: A3- HOR: 1:2000 VER: 1:200	Date: MARCH 2024

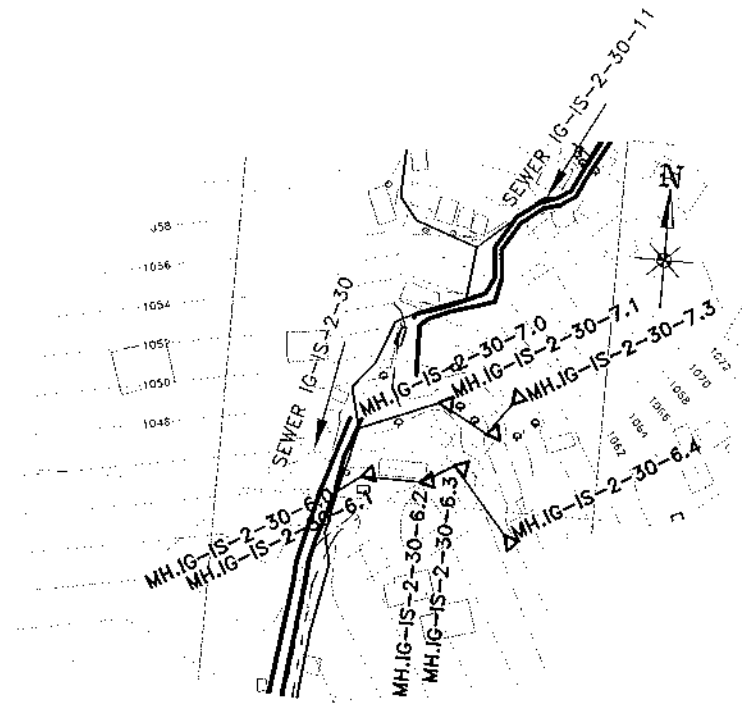
DRG No. M394(j)/MWZIG/08

SEWER IG-IS-2-30-6

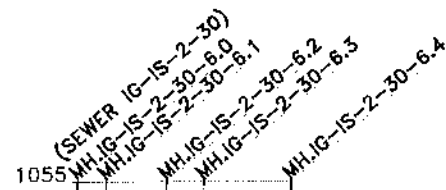
MANHOLE COORDINATES		
REF. No	NORTHING	EASTING
MH.IG-IS-2-30-6.0	9720501.530	489232.033
MH.IG-IS-2-30-6.1	9720505.928	489238.036
MH.IG-IS-2-30-6.2	9720505.784	489253.751
MH.IG-IS-2-30-6.3	9720510.805	489262.288
MH.IG-IS-2-30-6.4	9720493.631	489277.442

SEWER IG-IS-2-30-7

MANHOLE COORDINATES		
REF. No	NORTHING	EASTING
MH.IG-IS-2-30-7.0	9720518.413	489236.254
MH.IG-IS-2-30-7.1	9720526.934	489256.902
MH.IG-IS-2-30-7.2	9720519.861	489270.027
MH.IG-IS-2-30-7.3	9720528.426	489276.350

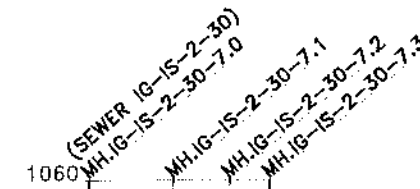


**SEWER IG-IS-2-30-6 & IG-IS-2-30-7
PLAN**



DATUM (m)	1040					
GROUND LEVELS (m)	1044.23	1045.17	1045.73	1049.22	1049.63	1051.23
TYPE OF PIPE AND SIZE	OD 110mm HDPE PIPE (PN6) BUTT FUSION JOINTING					
TYPE OF BED AND SURROUND	TYPE 'D'					
INVERT LEVELS (m)	1043.93	1044.08	1045.00	1045.40	1046.76	1049.37
GRADIENT	1:8	1:31	1:3	1:11		
DEPTH FROM GROUND LEVEL TO INVERT LEVEL (m)	0.15	0.17	0.33	0.07	0.46	0.26
DISTANCE IN KILOMETERS	0+000.00	0+007.44	0+020.00	0+023.15	0+033.06	0+040.00
						0+055.97

**SEWER IG-IS-2-30-6
LONGITUDINAL SECTION**



DATUM (m)	1045				
GROUND LEVELS (m)	1049.20	1050.66	1050.63	1052.00	1056.45
TYPE OF PIPE AND SIZE	OD 110mm HDPE PIPE (PN6) BUTT FUSION JOINTING				
TYPE OF BED AND SURROUND	TYPE 'D'				
INVERT LEVELS (m)	1048.69	1050.17	1050.30	1052.54	1055.31
GRADIENT		1:19	1:16	1:2	
DEPTH FROM GROUND LEVEL TO INVERT LEVEL (m)	0.15	0.09	0.49	0.35	0.14
DISTANCE IN KILOMETERS	0+000.00	0+020.00	0+022.34	0+040.00	0+047.88

**SEWER IG-IS-2-30-7
LONGITUDINAL SECTION**

NOTES:

- FOR GENERAL SEWER LAYOUT PLAN SEE DRG. No. M394(j)/MWZ/IG/01
- CONTOUR LEVELS ARE AT 2 METER INTERVALS
- GRID VALUES ARE AT 100 METER INTERVALS
- FOR BED AND SURROUND DETAILS REFER TO DRG. No. M394(j)/MWZ/SD/04
- SIMPLIFIED SEWER TO BE DONE TOGETHER WITH 1.2m WIDE SLOPPED FOOTPATH

LEGEND - PLAN

EXISTING FEATURES:

- 1220 CONTOUR WITH ELEVATIONS
- SEWER
- DRAIN
- FENCE
- PAVED ROAD
- MURRAM / EARTH ROAD
- PERMANENT BUILDING
- TEMPORARY BUILDING
- POWER POLE
- GATE
- CULVERT
- TP 9 TRIAL PIT

PROPOSED FEATURES:

- SEWER WITH MANHOLE

LEGEND - PROFILE

EXISTING FEATURES:

- GROUND LEVEL

PROPOSED FEATURES:

- GRAVITY SEWER WITH MANHOLE

REVISIONS				SIGN	DATE	APPROVED
BY	CHECKED					

CLIENT:

EAST AFRICAN COMMUNITY (EAC)
LAKE VICTORIA BASIN COMMISSION (LVBC)
P.O. BOX 1510 - 40100
KISUMU, KENYA
TEL: +254 57 202 6344

PROJECT IMPLEMENTATION CONSULTANTS (PIC):

JOINT VENTURE

CES
CES CONSULTING ENGINEERS
SALZGITTER GmbH
HAMBURGER STRASSE 227
38114 BRAUNSCHWEIG, GERMANY
E-MAIL: info@ces.de
TEL: +49 531 - 31704-0

AKUT
AKUT PARTNER
WATTSTRASSE 10
13355 BERLIN, GERMANY
TEL: +49 30 8145460 - 0
FAX: +49 30 8145460 - 19

MIBP

MANGAT I.B. PATEL (MIBP) LIMITED
P.O. BOX 48674, 00100-GPO,
NAIROBI, KENYA
E-MAIL: mibp.nairobi@mibp.co.ke
TEL: +254-2-2710500

PROJECT NAME:

LAKE VICTORIA BASIN INTEGRATED
WATER RESOURCES MANAGEMENT
PROGRAMME (LVB-IWRMP)

CONTRACT TITLE:

MWANZA SEWER CONNECTION UPGRADE

**INFILL SEWERS
IGOGO WARD**

DRAWING TITLE:

SEWERS IG-IS-2-30-6 & IG-IS-2-30-7
PLAN AND LONGITUDINAL SECTIONS

SHEET 1 OF 1

Designed by: C.N.M Drawn by: C.N.M

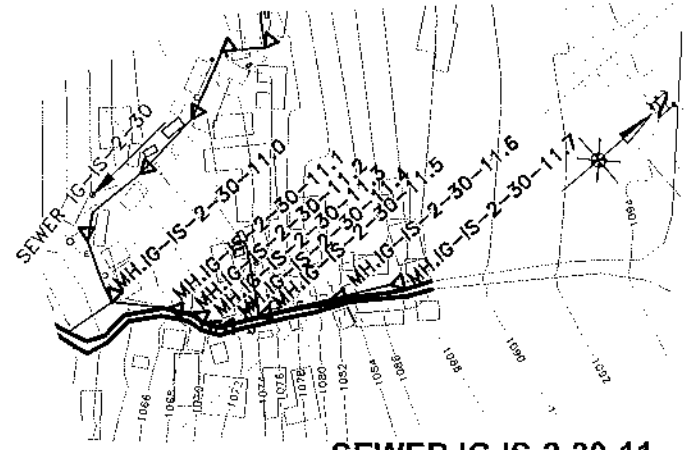
Checked by: N.J.N Approved by: R.S.R

Scale: A3: HOR: 1:2000 Date: MARCH 2024
VER: 1:200

DRG No. M394(j)/MWZ/IG/09

SEWER IG-IS-2-30-11

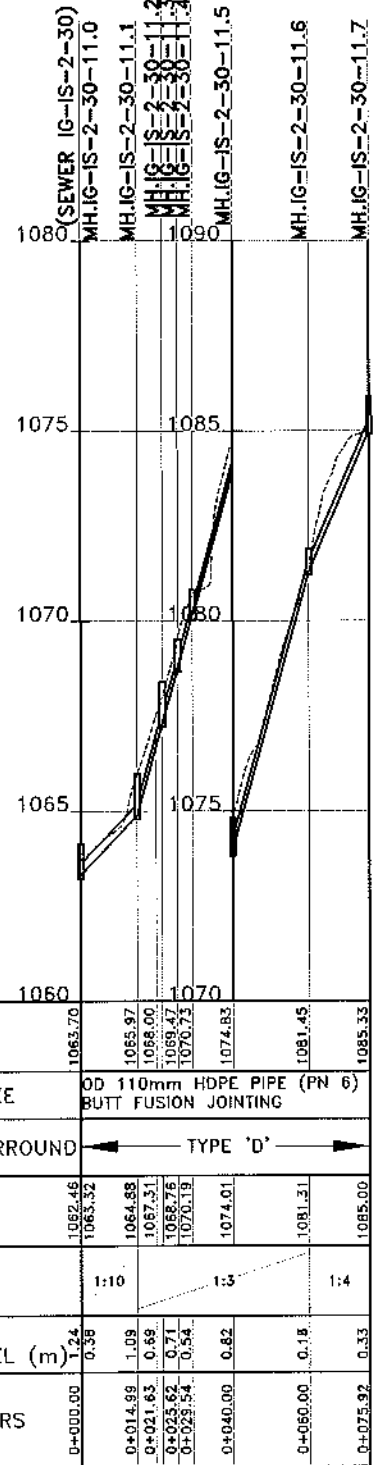
MANHOLE COORDINATES		
REF. No	NORTHING	EASTING
MH.IG-IS-2-30-11.0	9720568.458	489263.031
MH.IG-IS-2-30-11.1	9720578.661	489274.019
MH.IG-IS-2-30-11.2	9720582.748	489279.252
MH.IG-IS-2-30-11.3	9720583.579	489283.151
MH.IG-IS-2-30-11.4	9720585.791	489286.380
MH.IG-IS-2-30-11.5	9720595.259	489290.877
MH.IG-IS-2-30-11.6	9720612.937	489300.229
MH.IG-IS-2-30-11.7	9720627.083	489307.481



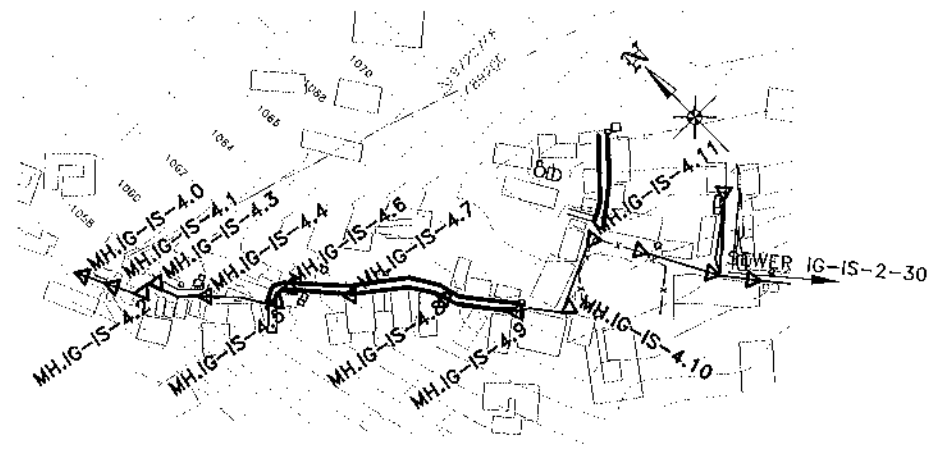
SEWER IG-IS-2-30-11 PLAN

SEWER IG-IS-4

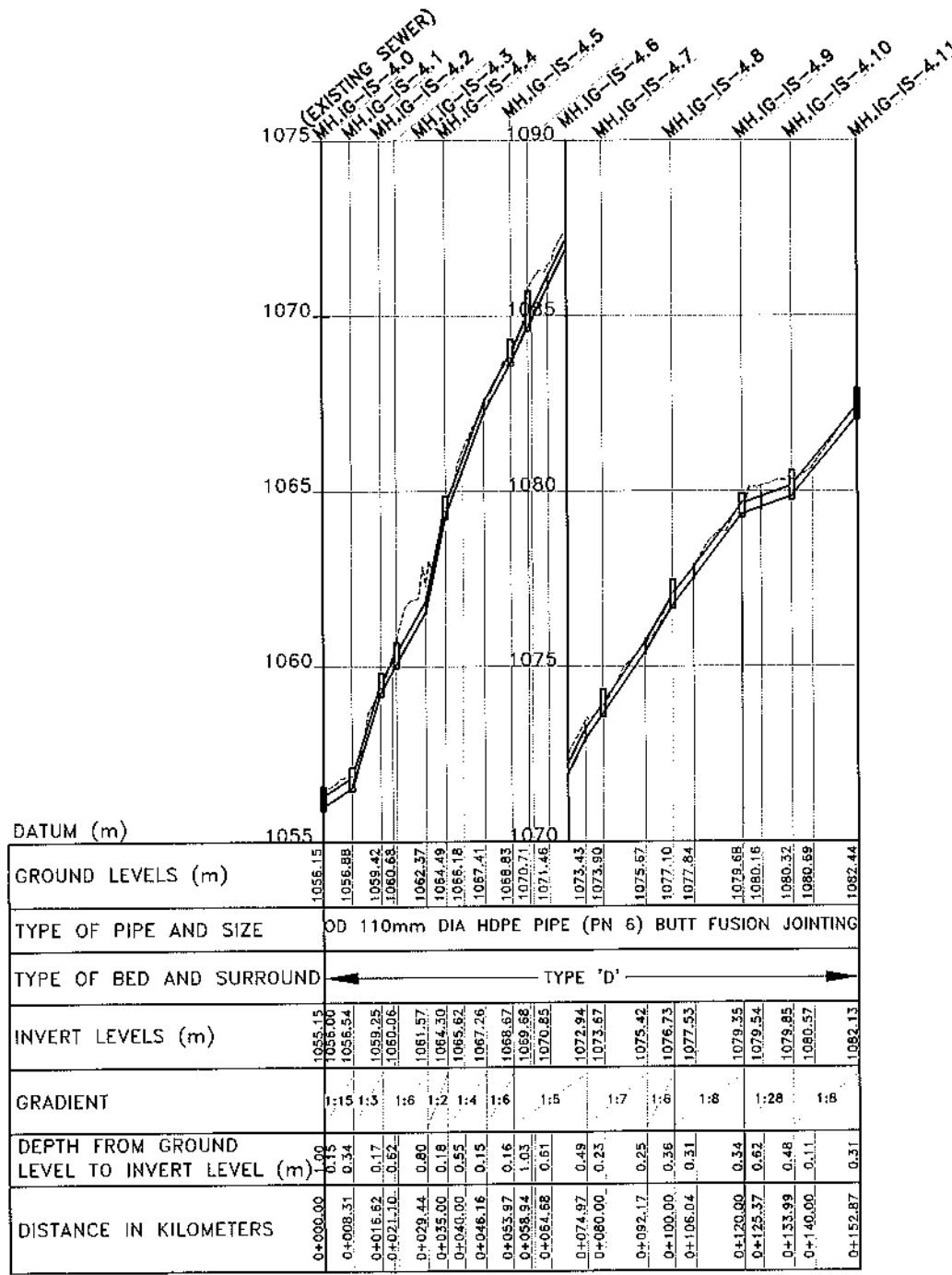
MANHOLE COORDINATES		
REF. No	NORTHING	EASTING
MH.IG-IS-4.0	9720783.680	489097.669
MH.IG-IS-4.1	9720776.205	489101.300
MH.IG-IS-4.2	9720768.730	489104.931
MH.IG-IS-4.3	9720767.999	489109.350
MH.IG-IS-4.4	9720756.466	489116.429
MH.IG-IS-4.5	9720741.794	489128.314
MH.IG-IS-4.6	9720741.798	489133.282
MH.IG-IS-4.7	9720726.585	489147.727
MH.IG-IS-4.8	9720712.361	489161.409
MH.IG-IS-4.9	9720695.721	489171.897
MH.IG-IS-4.10	9720685.908	489181.738
MH.IG-IS-4.11	9720693.709	489198.933



SEWER IG-IS-2-30-11 LONGITUDINAL SECTION



SEWER IG-IS-4 PLAN



SEWER IG-IS-4 LONGITUDINAL SECTION

NOTES:

- FOR GENERAL SEWER LAYOUT PLAN SEE DRG. No. M394(J)MWZIG/01
- CONTOUR LEVELS ARE AT 2 METER INTERVALS
- GRID VALUES ARE AT 100 METER INTERVALS
- FOR BED AND SURROUND DETAILS REFER TO DRG. No. M394(J)MWZIG/04
- SIMPLIFIED SEWER TO BE DONE TOGETHER WITH 1.2m WIDE STEPPED FOOTPATH

LEGEND - PLAN

- EXISTING FEATURES:**
- 1220 CONTOUR WITH ELEVATIONS
 - SEWER
 - DRAIN
 - FENCE
 - PAVED ROAD
 - MURRAM / EARTH ROAD
 - PERMANENT BUILDING
 - TEMPORARY BUILDING
 - POWER POLE
 - GATE
 - CULVERT
 - TP 9 TRIAL PIT
- PROPOSED FEATURES:**
- SEWER WITH MANHOLE

LEGEND - PROFILE

- EXISTING FEATURES:**
- GROUND LEVEL
- PROPOSED FEATURES:**
- GRAVITY SEWER WITH MANHOLE

REVISIONS	SIGN	DATE	APPROVED

CLIENT:

EAST AFRICAN COMMUNITY (EAC)
LAKE VICTORIA BASIN COMMISSION (LVBC)
P.O. BOX 1510 - 40100
KISUMU, KENYA
TEL: +254 57 202 6344

PROJECT IMPLEMENTATION CONSULTANTS (PIC):

JOINT VENTURE

CES CONSULTING ENGINEERS
SALZGITTER GmbH
HAMBURGER STRASSE 227
38114 BRAUNSCHWEIG, GERMANY
E-MAIL: info@ces.de
TEL: +49 531 - 31704-0

AKUT PARTNER
WATTSTRASSE 10
13355 BERLIN, GERMANY
TEL: +49 30 8145460-0
FAX: +49 30 8145460-19

MIBP CONSULTING ENGINEERS
MANGAT I.B. PATEL (MIBP) LIMITED
P.O. BOX 48674, 00100-GPO,
NAIROBI, KENYA
E-MAIL: mibp.nairobi@mibp.co.ke
TEL: +254-2-2710500

PROJECT NAME:

LAKE VICTORIA BASIN INTEGRATED WATER RESOURCES MANAGEMENT PROGRAMME (LVB-IWRMP)

CONTRACT TITLE:

MWANZA SEWER CONNECTION UPGRADE

INFILL SEWERS IGOGO WARD

DRAWING TITLE:

SEWERS IG-IS-2-30-11 & IG-IS-4 PLAN AND LONGITUDINAL SECTION

SHEET 1 OF 1

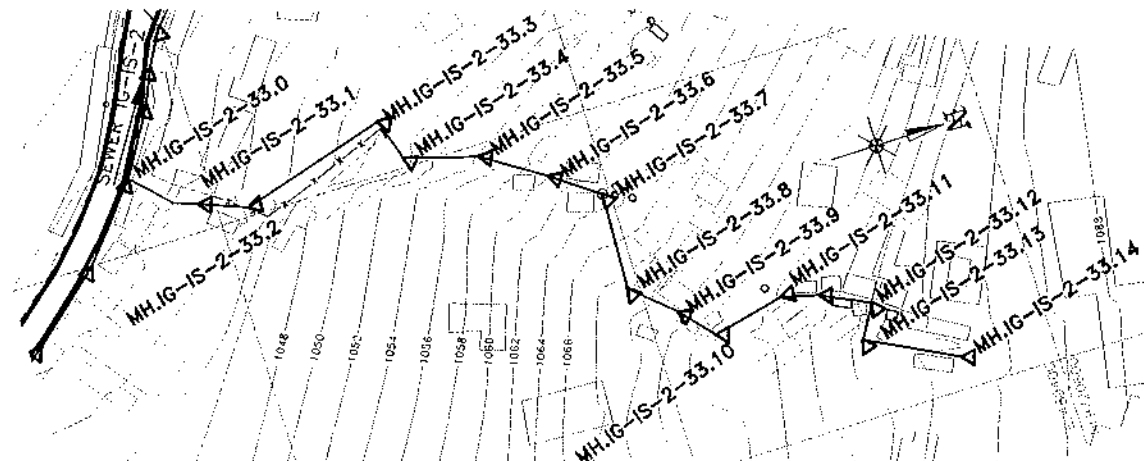
Designed by: C.N.M Drawn by: C.N.M

Checked by: N.J.N Approved by: R.S.R

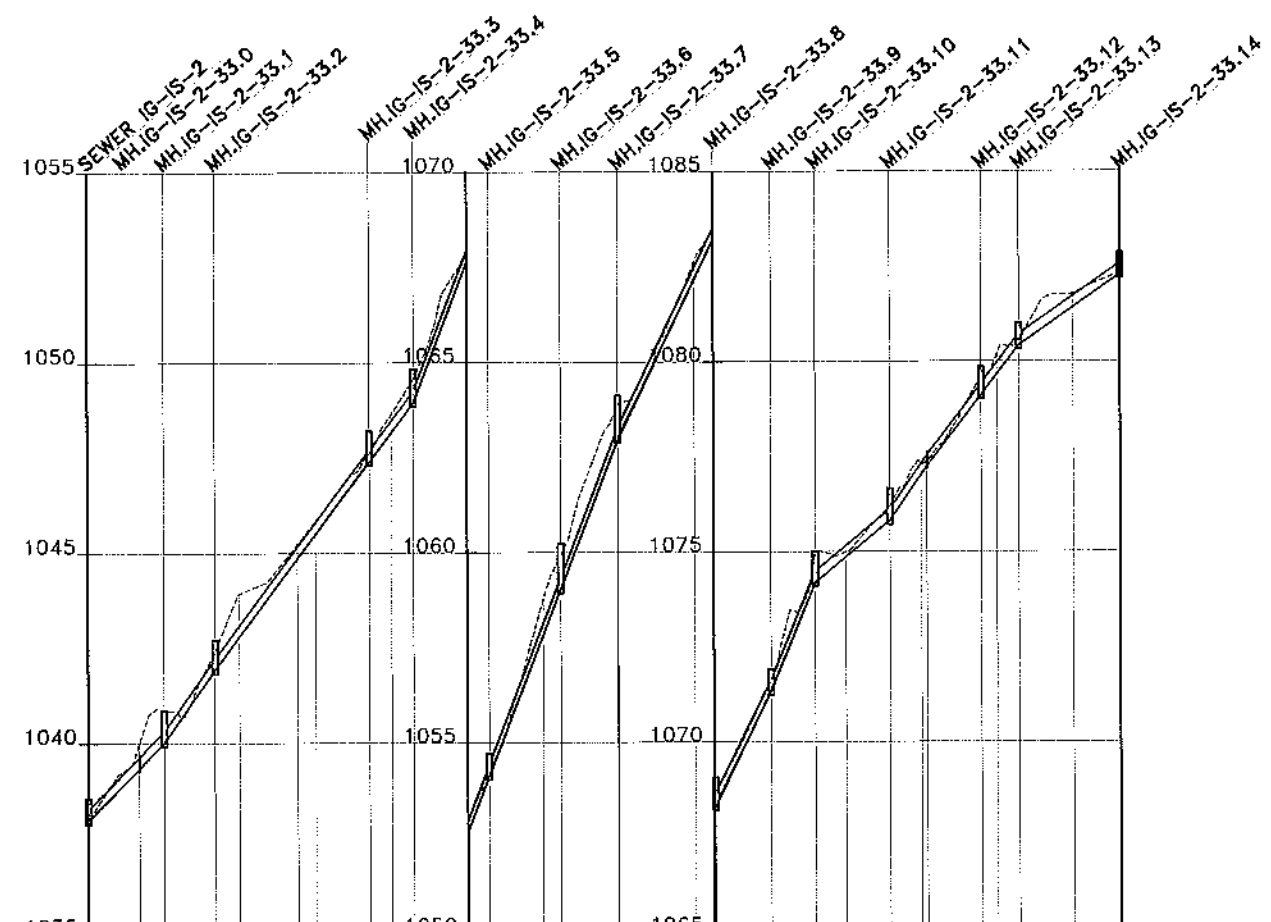
Scale: A3: HOR: 1:2,000 Date: MARCH 2024
VER: 1:200

DRG No. M394(J)MWZIG/10 REV

MANHOLE COORDINATES		
REF. No	NORTHING	EASTING
MH.IG-IS-2-33.0	9720380.072	489280.988
MH.IG-IS-2-33.1	9720395.648	489292.828
MH.IG-IS-2-33.2	9720408.155	489297.674
MH.IG-IS-2-33.3	9720447.274	489286.407
MH.IG-IS-2-33.4	9720450.808	489297.539
MH.IG-IS-2-33.5	9720469.914	489303.154
MH.IG-IS-2-33.6	9720485.837	489313.517
MH.IG-IS-2-33.7	9720498.032	489322.354
MH.IG-IS-2-33.8	9720496.881	489347.988
MH.IG-IS-2-33.9	9720507.731	489357.708
MH.IG-IS-2-33.10	9720515.492	489366.531
MH.IG-IS-2-33.11	9720534.852	489362.188
MH.IG-IS-2-33.12	9720557.270	489370.902
MH.IG-IS-2-33.13	9720552.048	489379.448
MH.IG-IS-2-33.14	9720575.573	489391.491



**SEWER IG-IS-2-33
PLAN**



DATUM (m)	1035	1050	1065	1080	1095	1110	1125	1140	1155	1170	1185	1200	1215	1230	1245	1260	1272.19											
GROUND LEVELS (m)	1038.11	1040.01	1040.86	1042.41	1043.94	1045.24	1045.85	1047.61	1048.66	1049.56	1052.98	1054.14	1058.76	1059.92	1063.93	1067.64	1068.70	1071.62	1074.94	1074.98	1076.22	1077.41	1079.85	1080.20	1080.55	1081.79	1082.43	
TYPE OF PIPE AND SIZE	OD 110mm HDPE PIPE WITH BUTT FUSION JOINTING TO PN 6																											
TYPE OF BED AND SURROUND	TYPE 'B0'																											
INVERT LEVELS (m)	1036.95	1037.97	1039.34	1040.02	1041.92	1042.81	1044.85	1045.49	1047.39	1048.17	1048.96	1052.64	1054.12	1057.82	1059.04	1063.00	1067.17	1068.30	1071.34	1074.19	1074.87	1075.82	1077.25	1079.12	1079.68	1080.43	1081.43	1082.28
GRADIENT	1:10	1:7	1:7	1:7	1:7	1:7	1:7	1:7	1:7	1:7	1:4	1:4	1:5	1:5	1:5	1:5	1:5	1:5	1:4	1:12	1:7	1:7	1:8	1:8	1:8	1:8	1:14	
DEPTH FROM GROUND LEVEL TO INVERT LEVEL (m)	0.16	0.17	0.67	0.85	0.49	1.13	0.39	0.36	0.23	0.48	0.60	0.35	0.32	0.84	0.89	0.27	0.47	0.40	0.27	0.76	0.13	0.39	0.16	0.73	0.33	0.12	0.36	0.13
DISTANCE IN KILOMETERS	0+000.00	0+013.37	0+030.00	0+033.41	0+040.00	0+055.25	0+060.00	0+074.12	0+080.00	0+085.80	0+100.00	0+105.72	0+120.00	0+124.71	0+140.00	0+160.00	0+165.43	0+180.00	0+191.75	0+200.00	0+211.58	0+221.43	0+235.74	0+240.00	0+245.76	0+260.00	0+272.19	

**SEWER IG-IS-2-33
LONGITUDINAL SECTION**

NOTES:

- FOR GENERAL SEWER LAYOUT PLAN SEE DRG. No. M394(j)/MWZ/IG/01
- CONTOUR LEVELS ARE AT 2 METER INTERVALS
- GRID VALUES ARE AT 100 METER INTERVALS
- FOR BED AND SURROUND DETAILS REFER TO DRG. No. M394(j)/MWZ/SD/04
- SIMPLIFIED SEWER TO BE DONE TOGETHER WITH 1.2m WIDE STEPPED FOOTPATH

LEGEND - PLAN

- EXISTING FEATURES:**
- 1220 CONTOUR WITH ELEVATIONS
 - SEWER
 - DRAIN
 - FENCE
 - PAVED ROAD
 - MURRAM / EARTH ROAD
 - PERMANENT BUILDING
 - TEMPORARY BUILDING
 - POWER POLE
 - GATE
 - CULVERT
 - TP 9 TRIAL PIT
- PROPOSED FEATURES:**
- SEWER WITH MANHOLE

LEGEND - PROFILE

- EXISTING FEATURES:**
- GROUND LEVEL
- PROPOSED FEATURES:**
- GRAVITY SEWER WITH MANHOLE

REVISIONS			
NO.	BY	DATE	APPROVED

CLIENT:

 EAST AFRICAN COMMUNITY (EAC)
LAKE VICTORIA BASIN COMMISSION (LVBC)
P.O. BOX 1510 - 40100
KISUMU, KENYA
TEL: +254 57 202 6344

PROJECT IMPLEMENTATION CONSULTANTS (PIC):

JOINT VENTURE

 **CCES**
CES CONSULTING ENGINEERS
SALZGITTER GmbH
HAMBURGER STRASSE 227
38114 BRAUNSCHWEIG, GERMANY
E-MAIL: info@ces.de
TEL: +49 531 - 31704-0

 **AKUT**
AKUT PARTNER
WATTSTRASSE 10
13355 BERLIN, GERMANY
TEL: +49 30 8145460 - 0
FAX: +49 30 8145460 - 19

 **MIBP**
MANGAT I.B. PATEL (MIBP) LIMITED
P.O. BOX 48674, 00100-GPO,
NAIROBI, KENYA
E-MAIL: mibp.nairobi@mibp.co.ke
TEL: +254-2-2710500

PROJECT NAME:

LAKE VICTORIA BASIN INTEGRATED
WATER RESOURCES MANAGEMENT
PROGRAMME (LVB-IWRMP)

CONTRACT TITLE:

MWANZA SEWER CONNECTION UPGRADE

**INFILL SEWERS
IGOGO WARD**

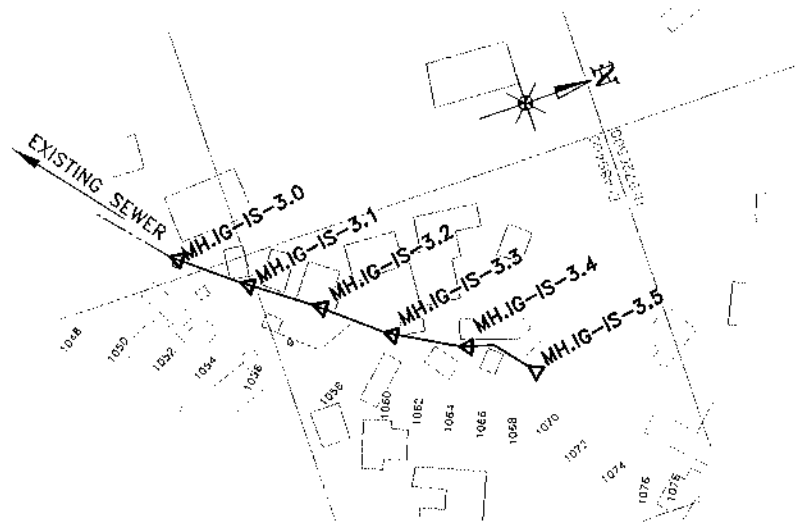
DRAWING TITLE:

SEWER IG-IS-2-33
PLAN AND LONGITUDINAL SECTION

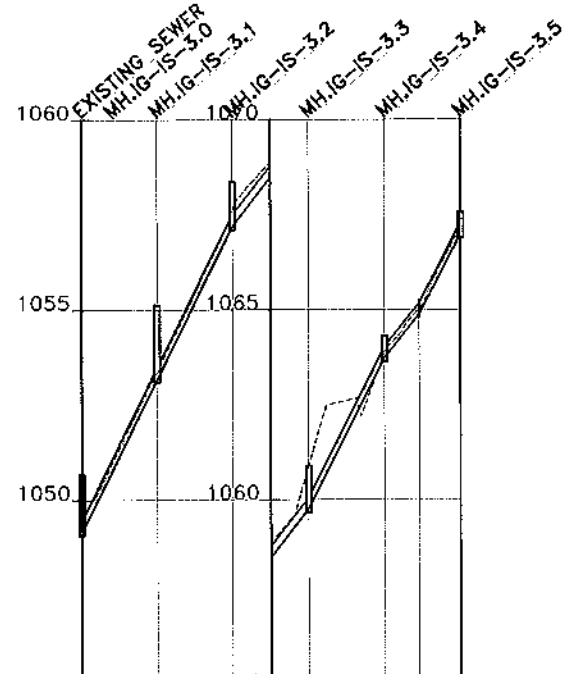
SHEET 1 OF 1

Designed by: C.N.M	Drawn by: C.N.M
Checked by: N.J.N	Approved by: R.S.R
Scale: A3- HOR: 1:200 VER: 1:200	Date: MARCH 2024
DRG No. M394(j)/MWZ/IG/11	REV

MANHOLE COORDINATES		
REF. No	NORTHING	EASTING
MH.IG-IS-3.0	9720381.218	489393.898
MH.IG-IS-3.1	9720396.780	489406.462
MH.IG-IS-3.2	9720412.973	489418.199
MH.IG-IS-3.3	9720428.299	489431.046
MH.IG-IS-3.4	9720445.702	489440.902
MH.IG-IS-3.5	9720461.318	489452.015



**SEWER IG-IS-3
PLAN**



DATUM (m)	1045					
GROUND LEVELS (m)	1049.55	1053.35	1057.63	1060.89	1063.86	1065.03
TYPE OF PIPE AND SIZE	OD 110mm DIA HDPE PIPE TO PN 6					
TYPE OF BED AND SURROUND	TYPE 'D'					
INVERT LEVELS (m)	1048.55 1049.16	1053.18	1057.20	1059.78	1063.73	1064.88
GRADIENT		1:5	1:8	1:5	1:8	1:5
DEPTH FROM GROUND LEVEL TO INVERT LEVEL (m)	0.00 0.40	0.18	0.43	1.11	0.15	0.15
DISTANCE IN KILOMETERS	0+000.00	0+020.00	0+040.00	0+060.00	0+080.00	0+100.00

**SEWER IG-IS-3
LONGITUDINAL SECTION**

NOTES:

- FOR GENERAL SEWER LAYOUT PLAN SEE DRG. No. M394(j)/MWZ/IG/01
- CONTOUR LEVELS ARE AT 2 METER INTERVALS
- GRID VALUES ARE AT 100 METER INTERVALS
- FOR BED AND SURROUND DETAILS REFER TO DRG. No. M394(j)/MWZ/SD/04
- SIMPLIFIED SEWER TO BE DONE TOGETHER WITH 1.2m WIDE STEPPED FOOTPATH

LEGEND - PLAN

- EXISTING FEATURES:**
- 1220 CONTOUR WITH ELEVATIONS
 - SEWER
 - DRAIN
 - FENCE
 - PAVED ROAD
 - MURRAM / EARTH ROAD
 - PERMANENT BUILDING
 - TEMPORARY BUILDING
 - POWER POLE
 - GATE
 - CULVERT
 - TP 9 TRIAL PIT
- PROPOSED FEATURES:**
- SEWER WITH MANHOLE

LEGEND - PROFILE

- EXISTING FEATURES:**
- GROUND LEVEL
- PROPOSED FEATURES:**
- GRAVITY SEWER WITH MANHOLE

REVISIONS				SICR	DATE	APPROVED

CLIENT:
EAST AFRICAN COMMUNITY (EAC)
LAKE VICTORIA BASIN COMMISSION (LVBC)
P.O. BOX 1510 - 40100
KISUMU, KENYA
TEL: +254 57 202 6344

PROJECT IMPLEMENTATION CONSULTANTS (PIC):
JOINT VENTURE

CES CONSULTING ENGINEERS
SALZGITTER GmbH
HAMBURGER STRASSE 227
38114 BRAUNSCHWEIG, GERMANY
E-MAIL: info@ces.de
TEL: +49 531 - 31704-0

AKUT PARTNER
WATTSTRASSE 10
13355 BERLIN, GERMANY
TEL: +49 30 8145460 - 0
FAX: +49 30 8145460 - 19

MIBP CONSULTING ENGINEERS
MANGAT I.B PATEL (MIBP) LIMITED
P.O BOX 48674,00100-GPO,
NAIROBI, KENYA
E-MAIL: mibp.nairobi@mibp.co.ke
TEL: +254-2-2710500

PROJECT NAME:
LAKE VICTORIA BASIN INTEGRATED WATER RESOURCES MANAGEMENT PROGRAMME (LVB-IWRMP)

CONTRACT TITLE:
MWANZA SEWER CONNECTION UPGRADE

**INFILL SEWERS
IGOGO WARD**

DRAWING TITLE:
SEWER IG-IS-3
PLAN AND LONGITUDINAL SECTION
SHEET 1 OF 1

Designed by: C.N.M	Drawn by: C.N.M
Checked by: N.J.N	Approved by: R.S.R
Scale: A3- HOR: 1:200 VER: 1:200	Date: MARCH 2024